



**GOVERNO DO
ESTADO DO CEARÁ**
Secretaria do Planejamento e Gestão



Universidade Federal do Ceará



Modelagem epidemiológica do COVID19 para o Estado do Ceará empregando o modelo SEIIR

Equipe Cientista-Chefe de Dados:

José Soares de Andrade Jr. (UFC - Física, CAPP - IPECE - SEPLAG)

Humberto Carmona (UFC - Física, CAPP - IPECE - SEPLAG)

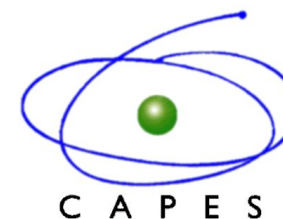
Rilder Pires (UNIFOR, CAPP - IPECE - SEPLAG)

Saulo Reis (UFC - Física, CAPP - IPECE - SEPLAG)

César Sampaio Filho (UFC - Física, CAPP - IPECE - SEPLAG)

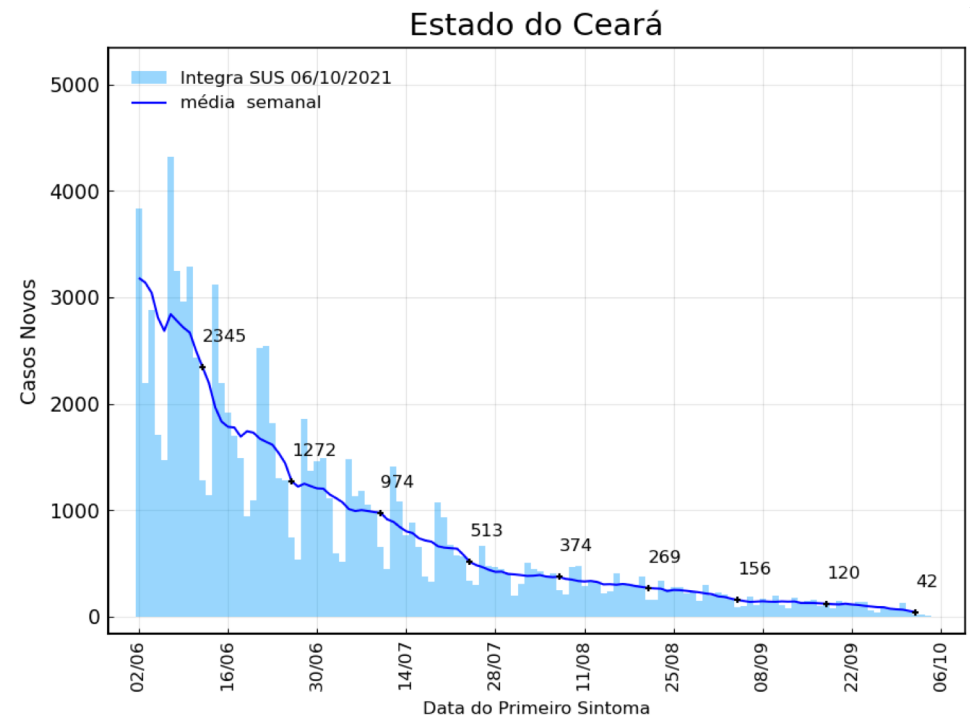
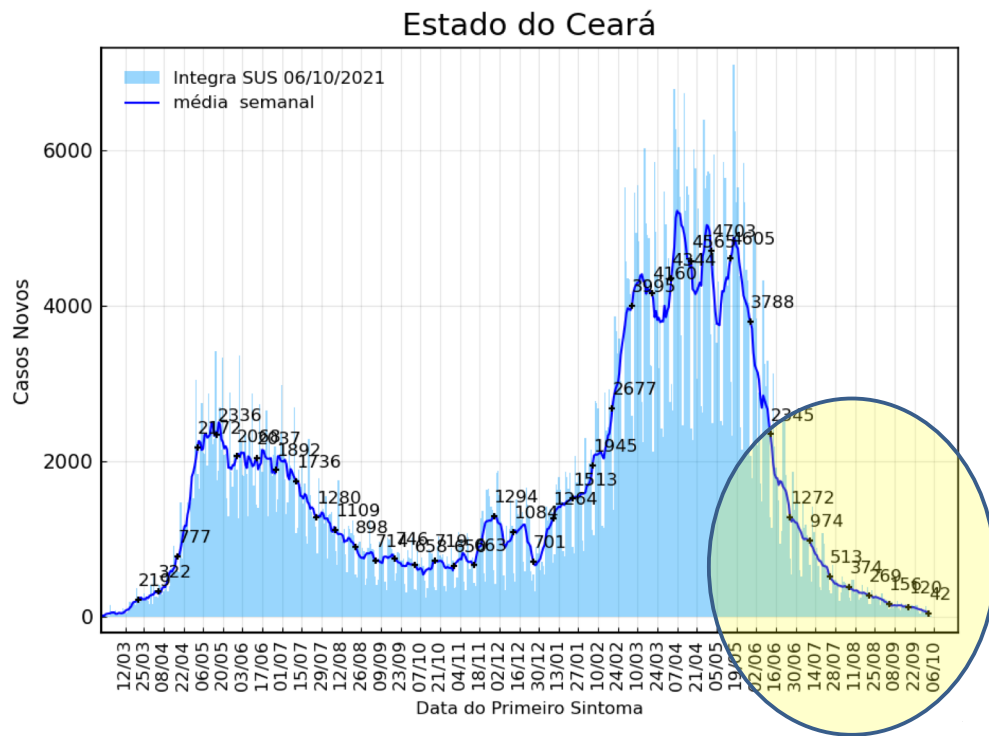


Conselho Nacional de Desenvolvimento
Científico e Tecnológico



Estado do Ceará

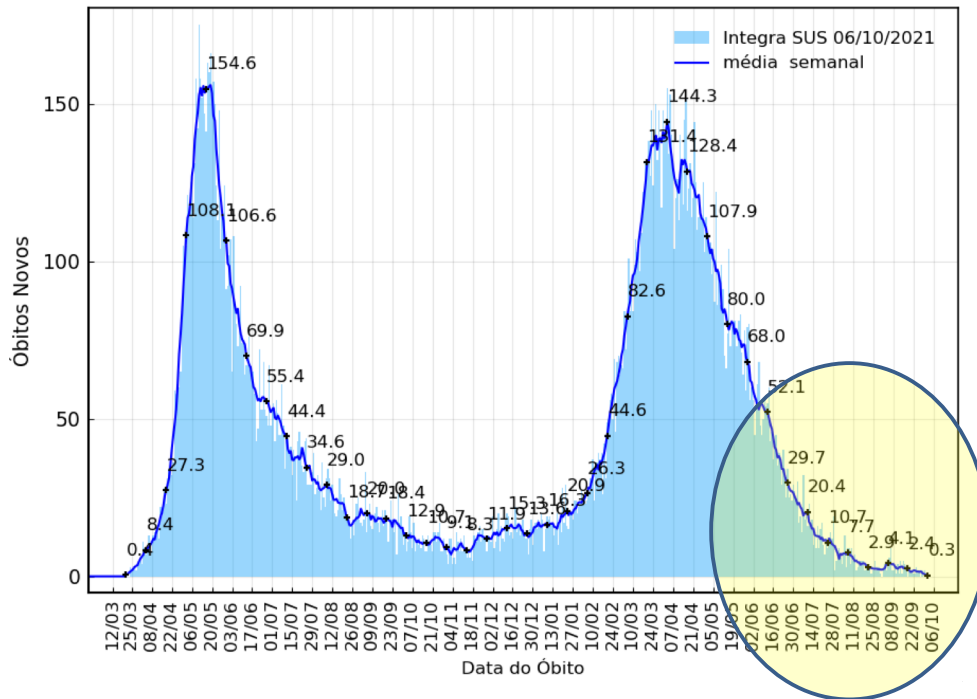
Dados atualizados em 07/10/2021



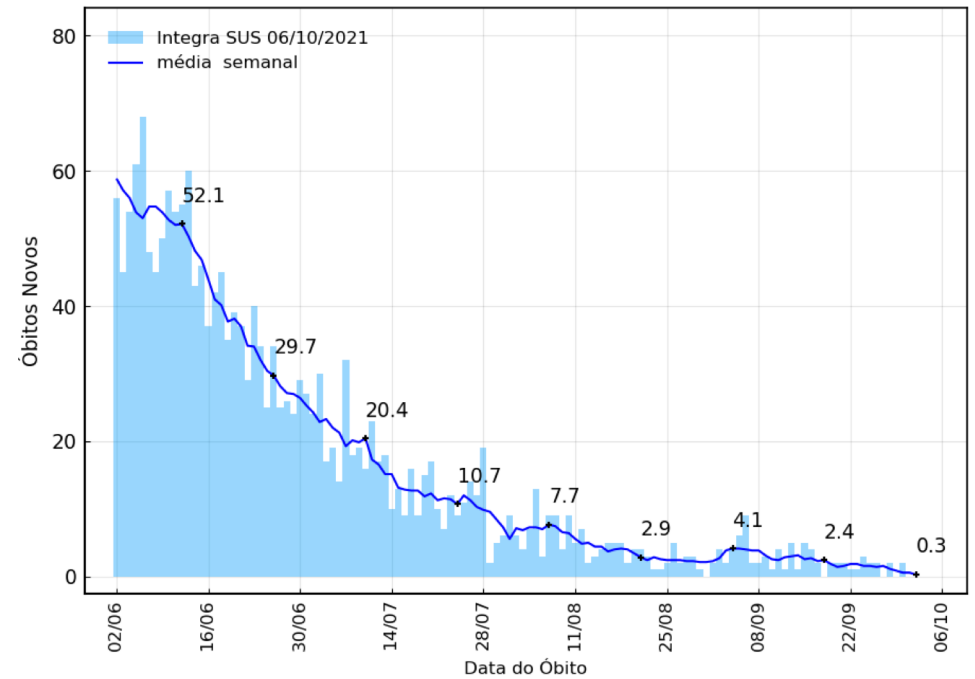
Estado do Ceará

Dados atualizados em 07/10/2021

Estado do Ceará

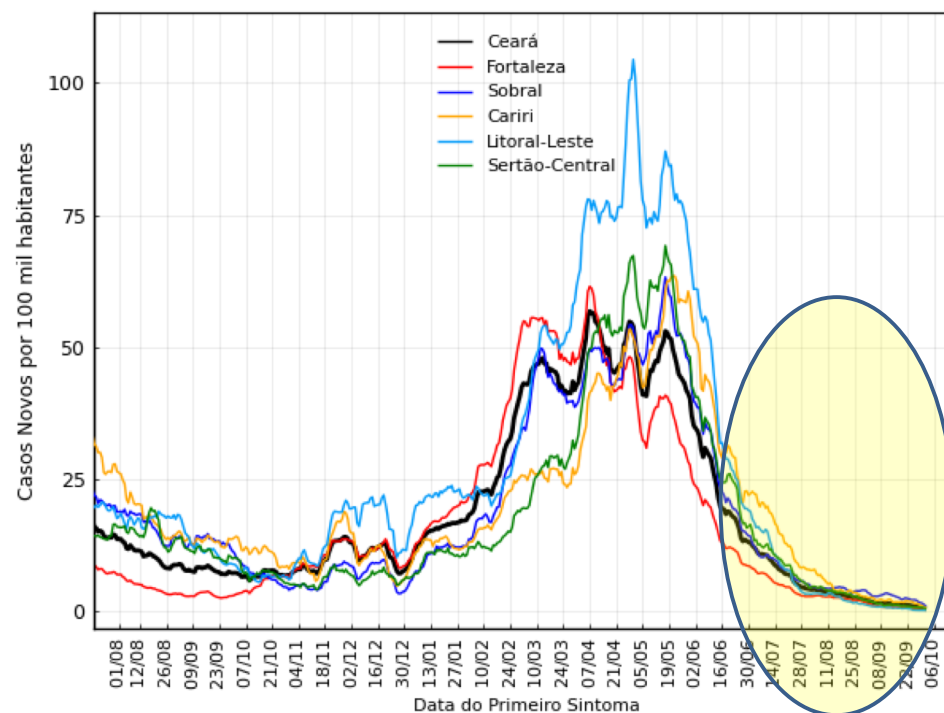
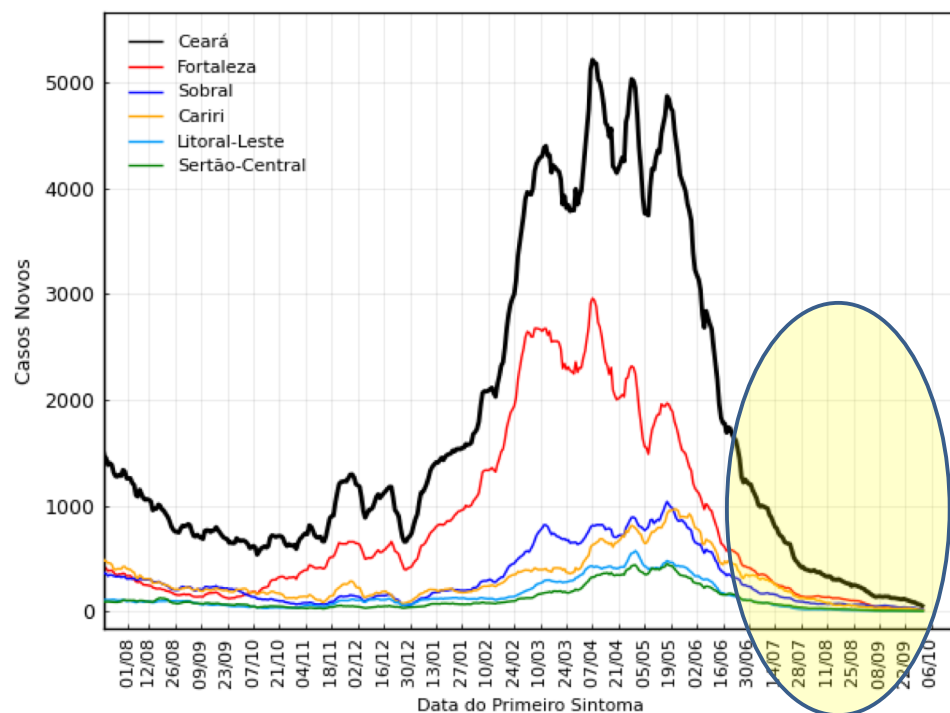


Estado do Ceará



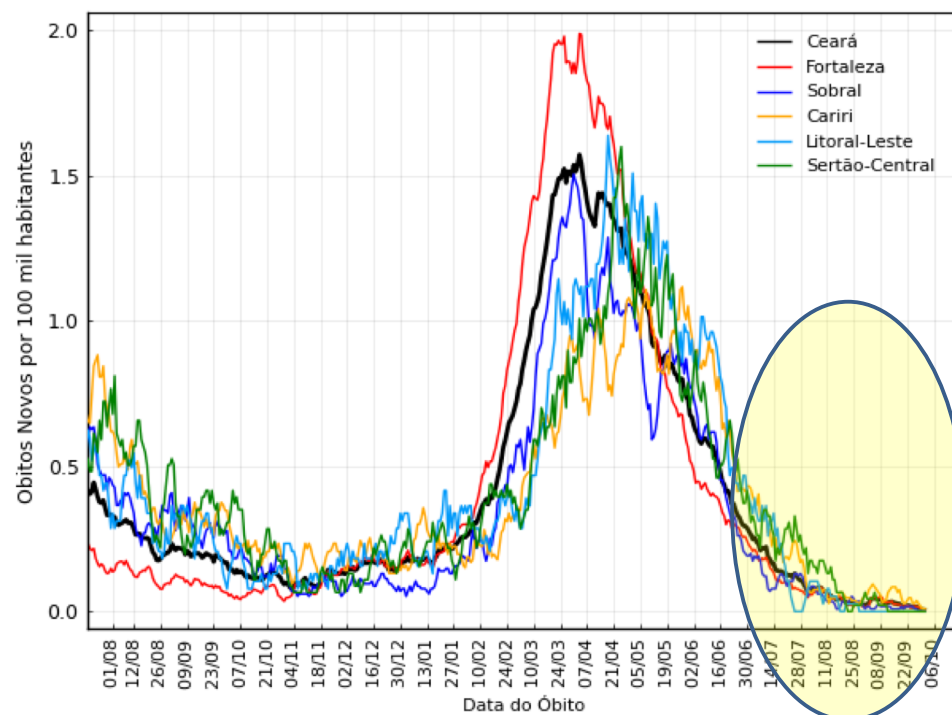
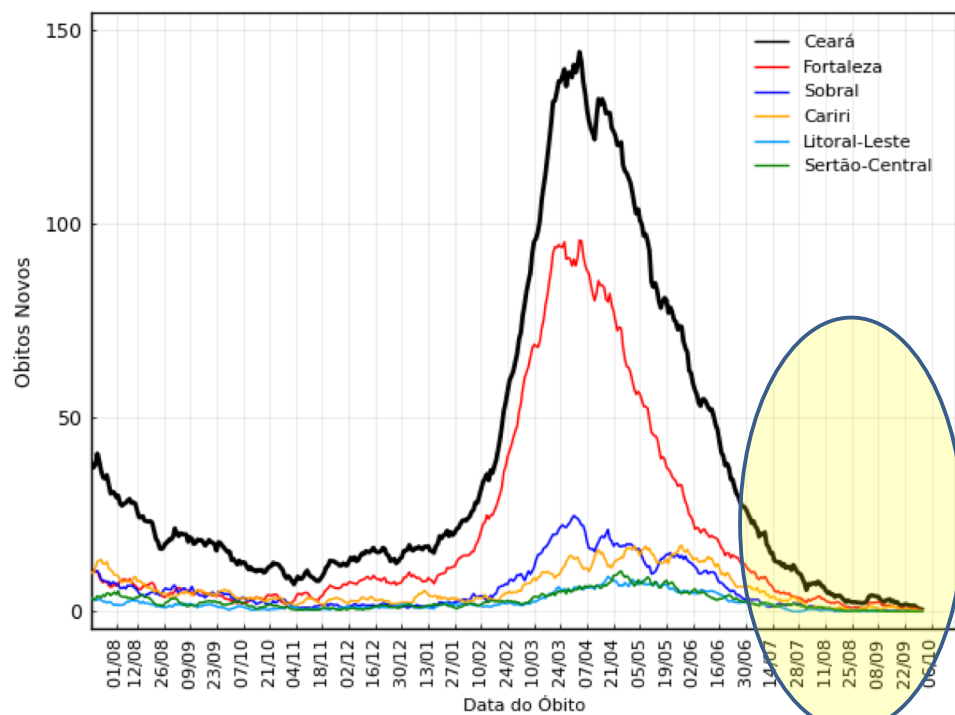
Evolução da Epidemia no Ceará por Macrorregiões

Casos Novos & Casos por 100 mil habitantes



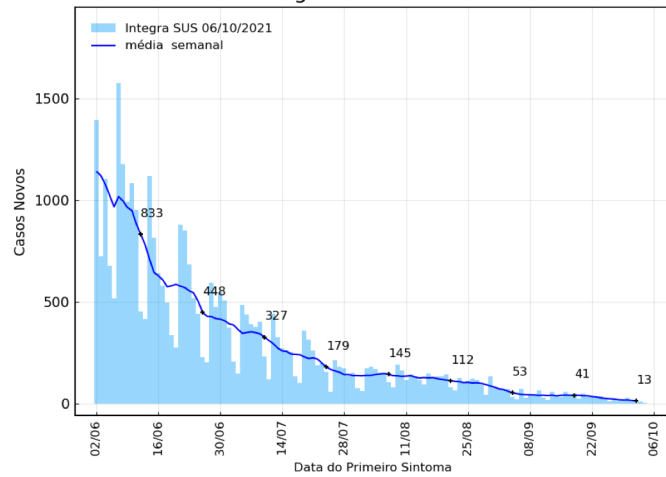
Evolução da Epidemia no Ceará por Macrorregiões

Óbitos Novos & Óbitos Novos por 100 mil habitantes

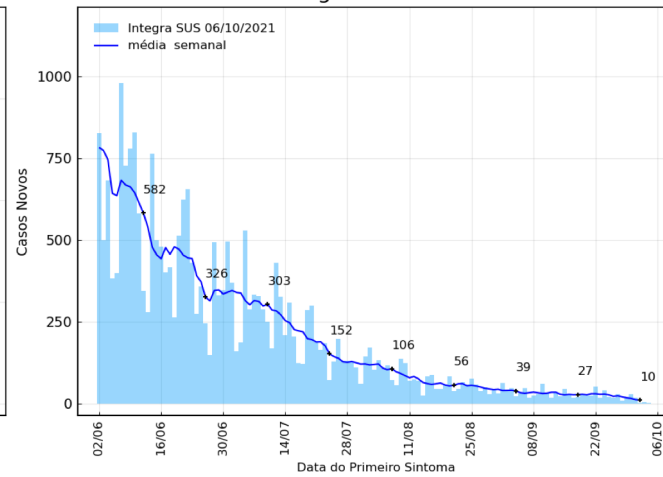


Evolução Recente de Casos no Ceará por Macrorregiões

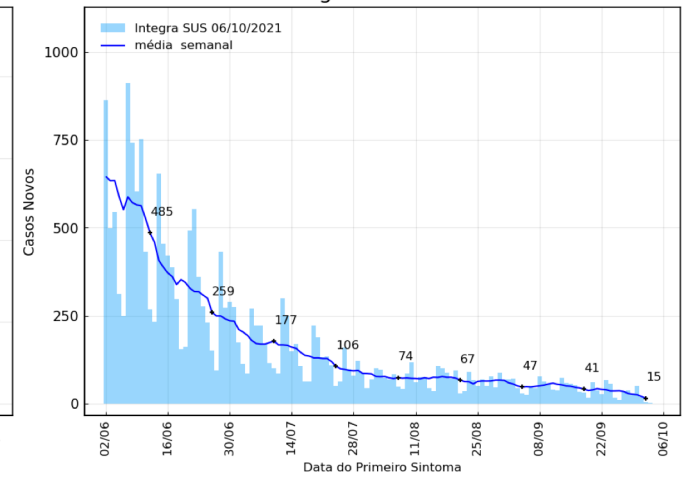
Região de Fortaleza



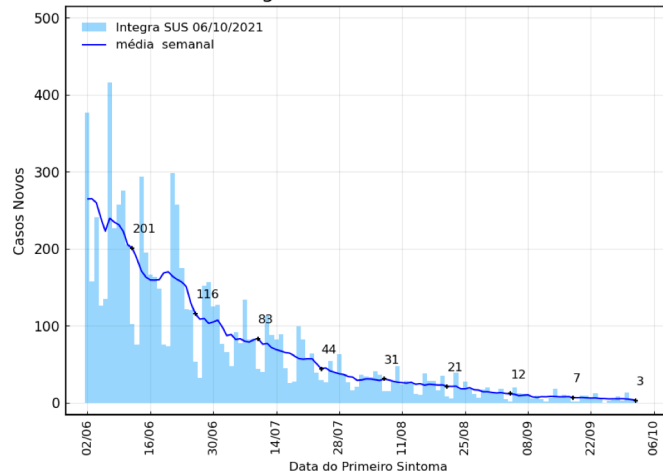
Região do Cariri



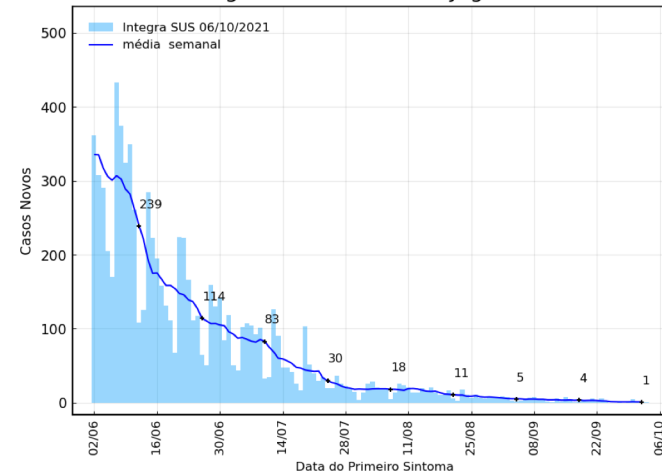
Região de Sobral



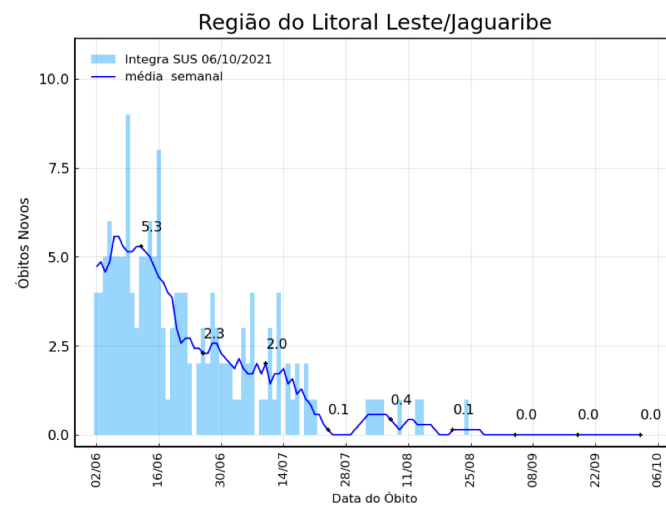
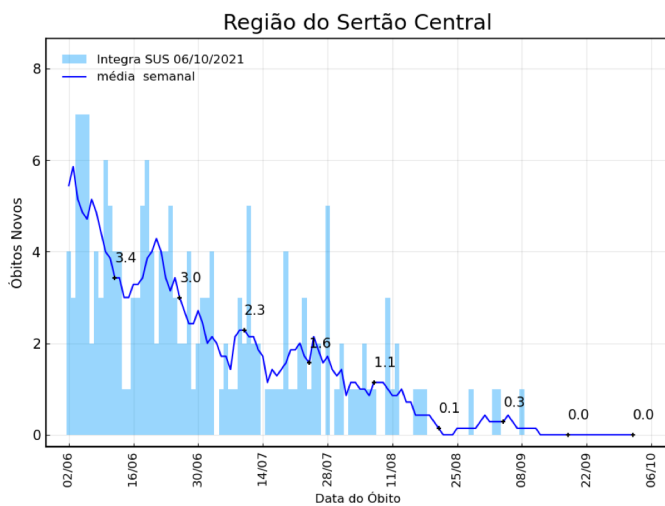
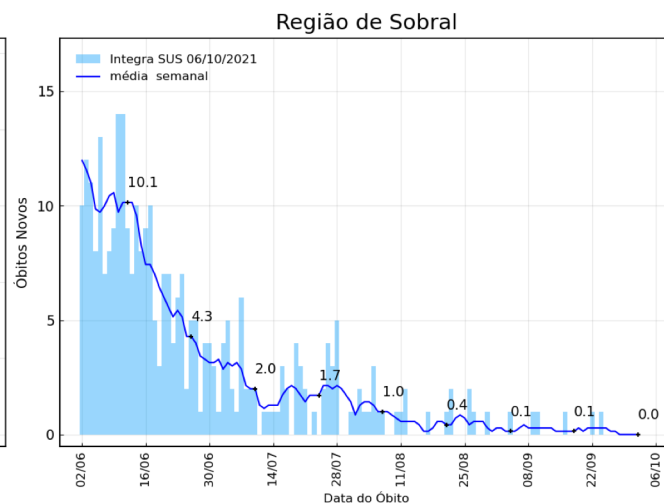
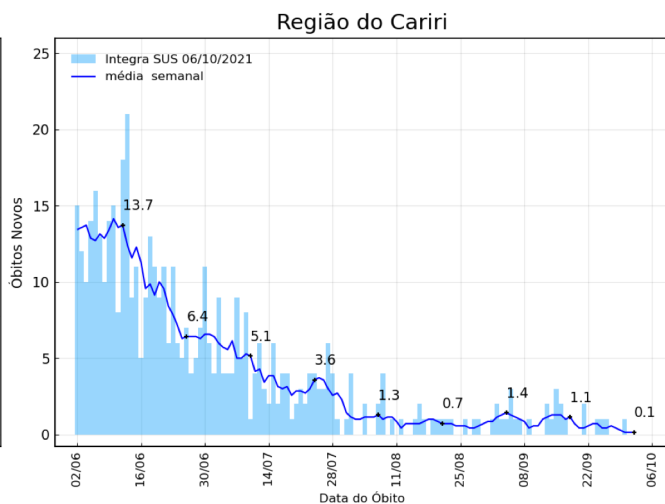
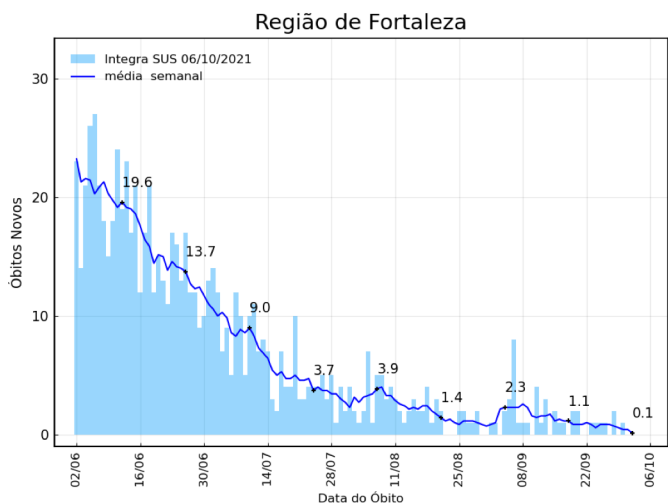
Região do Sertão Central



Região do Litoral Leste/Jaguaribe

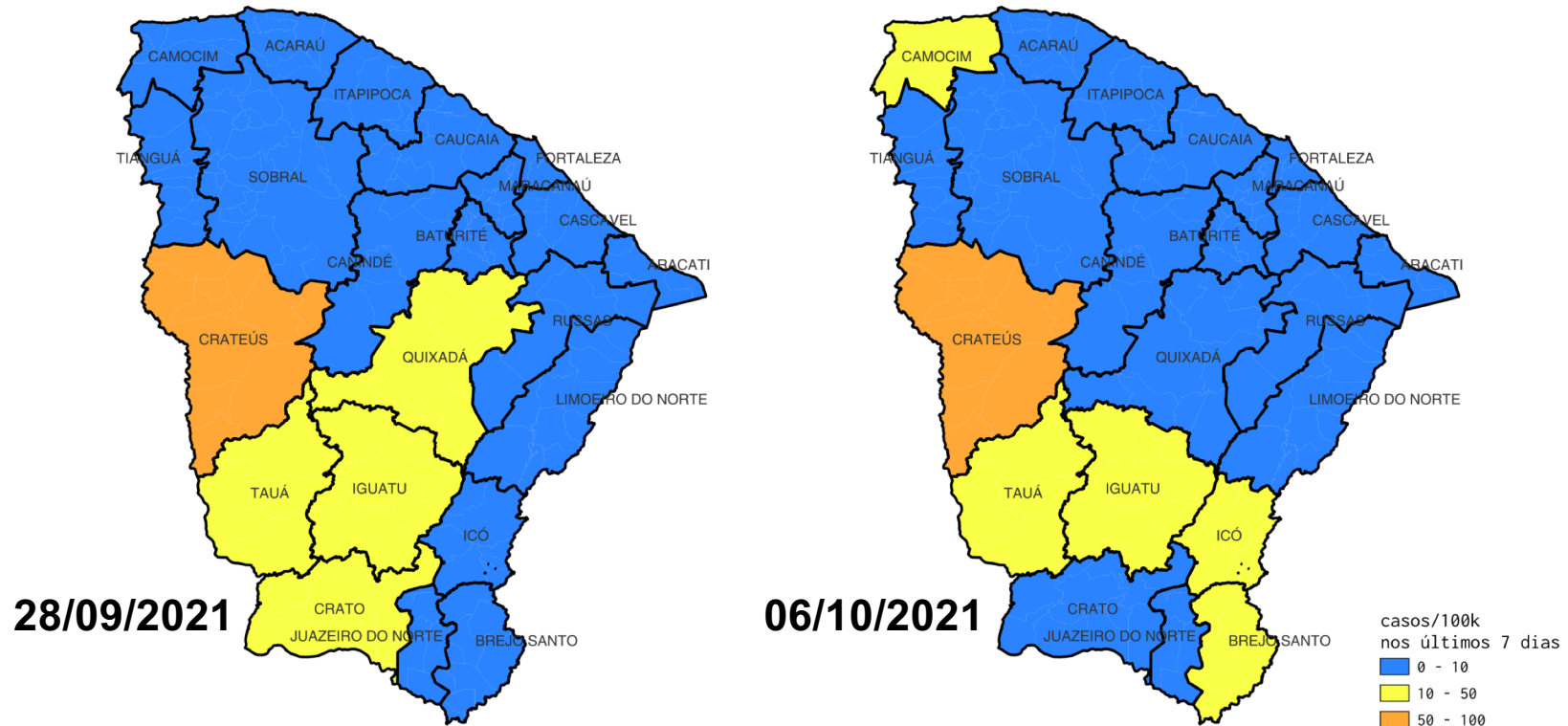


Evolução Recente de Óbitos no Ceará por Macrorregiões



Indicador CDC no Ceará por ADS

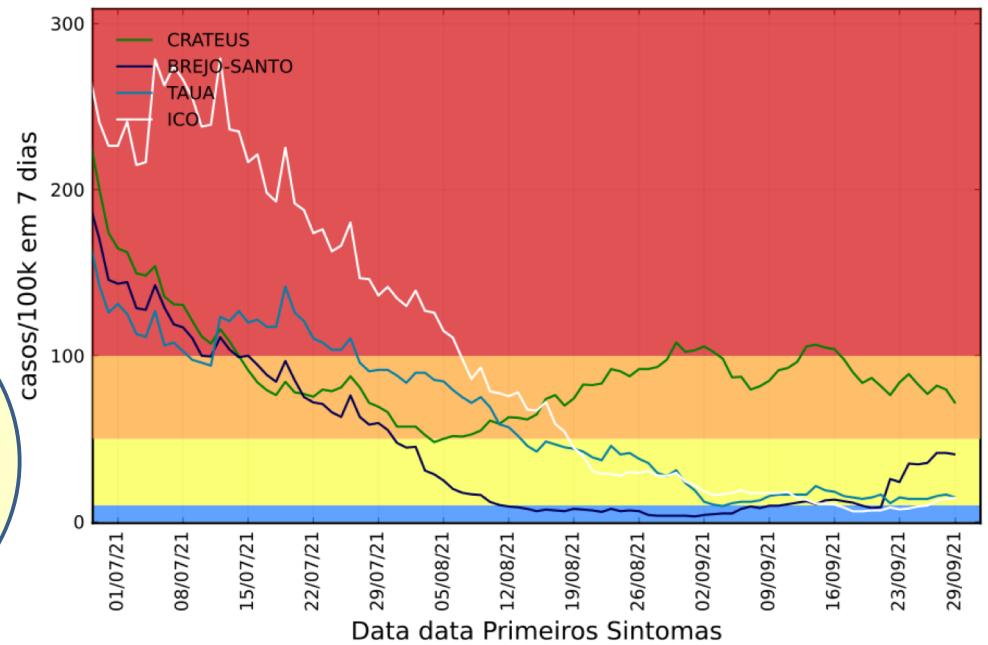
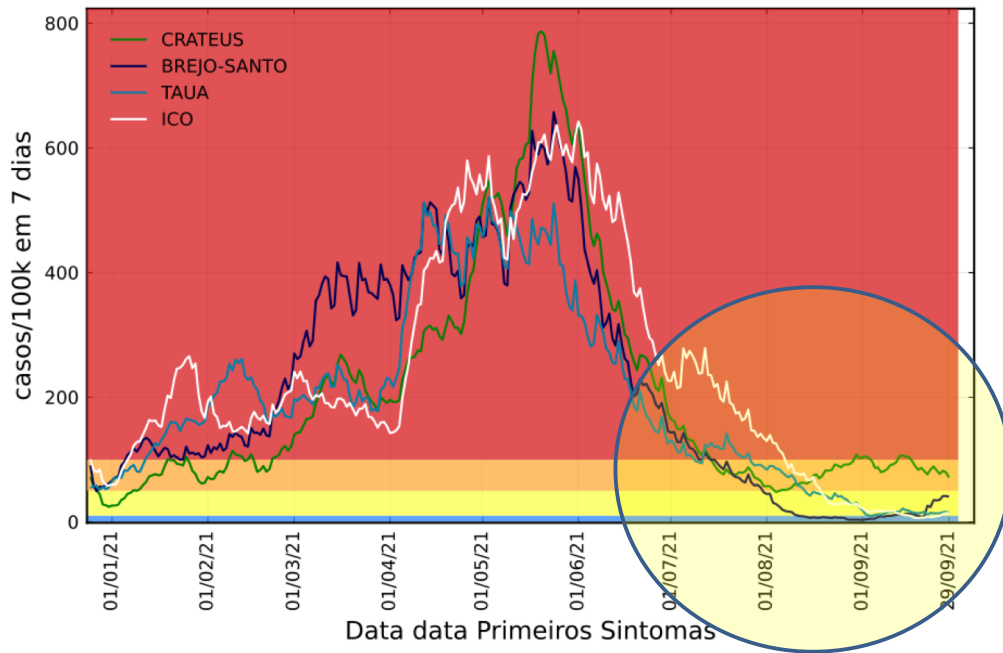
$\Sigma_{CDC} = \# \text{ total de casos por } 100 \text{ mil habitantes nos últimos } 7 \text{ dias}$



Indicator - If the two indicators suggest different transmission levels, the higher level is selected	Low Transmission Blue	Moderate Transmission Yellow	Substantial Transmission Orange	High Transmission Red
Total new cases per 100,000 persons in the past 7 days	0-9.99	10-49.99	50-99.99	≥100
Percentage of NAATs ¹ that are positive during the past 7 days	0-4.99%	5-7.99%	8-9.99%	≥10.0%

Indicador CDC no Ceará por ADS

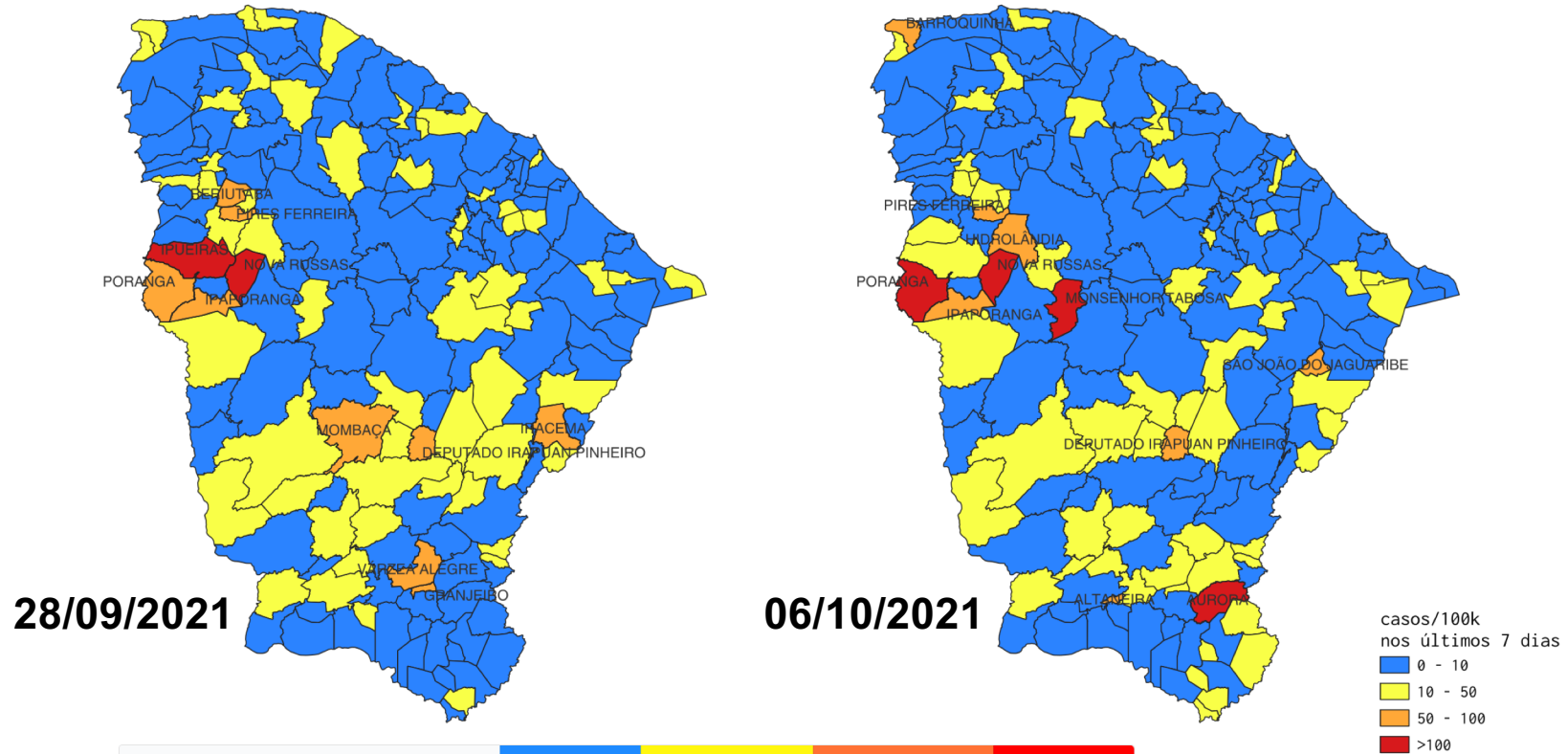
$\Sigma_{CDC} = \# \text{ total de casos por } 100 \text{ mil habitantes nos últimos } 7 \text{ dias}$



Indicator - If the two indicators suggest different transmission levels, the higher level is selected	Low Transmission Blue	Moderate Transmission Yellow	Substantial Transmission Orange	High Transmission Red
Total new cases per 100,000 persons in the past 7 days	0-9.99	10-49.99	50-99.99	≥100
Percentage of NAATs ¹ that are positive during the past 7 days	0-4.99%	5-7.99%	8-9.99%	≥10.0%

Indicador CDC no Ceará por Município

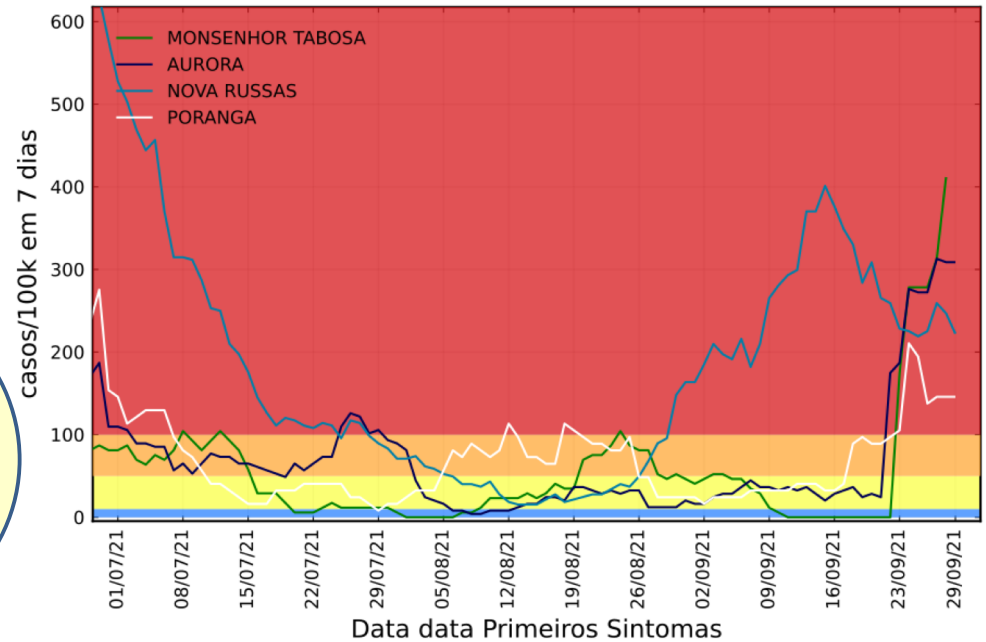
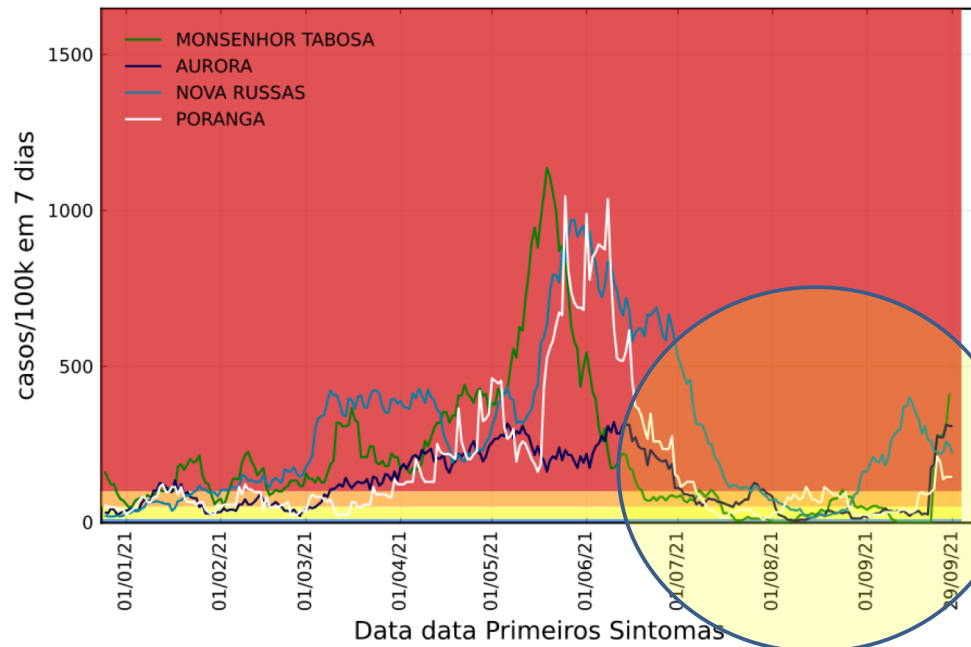
$\Sigma_{CDC} = \# \text{ total de casos por } 100 \text{ mil habitantes nos últimos } 7 \text{ dias}$



Indicator - If the two indicators suggest different transmission levels, the higher level is selected	Low Transmission Blue	Moderate Transmission Yellow	Substantial Transmission Orange	High Transmission Red
Total new cases per 100,000 persons in the past 7 days	0-9.99	10-49.99	50-99.99	≥100
Percentage of NAATs ¹ that are positive during the past 7 days	0-4.99%	5-7.99%	8-9.99%	≥10.0%

Indicador CDC no Ceará por Município

$\Sigma_{CDC} = \# \text{ total de casos por } 100 \text{ mil habitantes nos últimos } 7 \text{ dias}$



Indicator - If the two indicators suggest different transmission levels, the higher level is selected	Low Transmission Blue	Moderate Transmission Yellow	Substantial Transmission Orange	High Transmission Red
Total new cases per 100,000 persons in the past 7 days	0-9.99	10-49.99	50-99.99	≥100
Percentage of NAATs ¹ that are positive during the past 7 days	0-4.99%	5-7.99%	8-9.99%	≥10.0%