



GOVERNO DO  
ESTADO DO CEARÁ

Secretaria do Planejamento e Gestão



Universidade Federal do Ceará



## Modelagem epidemiológica do COVID19 para o Estado do Ceará empregando o modelo SEIIR

### Equipe Cientista-Chefe de Dados:

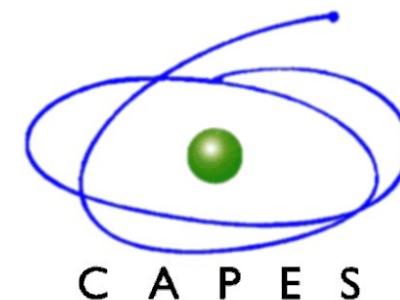
José Soares de Andrade Jr. (UFC - Física, CAPP - IPECE - SEPLAG)

Humberto Carmona (UFC - Física, CAPP - IPECE - SEPLAG)

Rilder Pires (UNIFOR, CAPP - IPECE - SEPLAG)

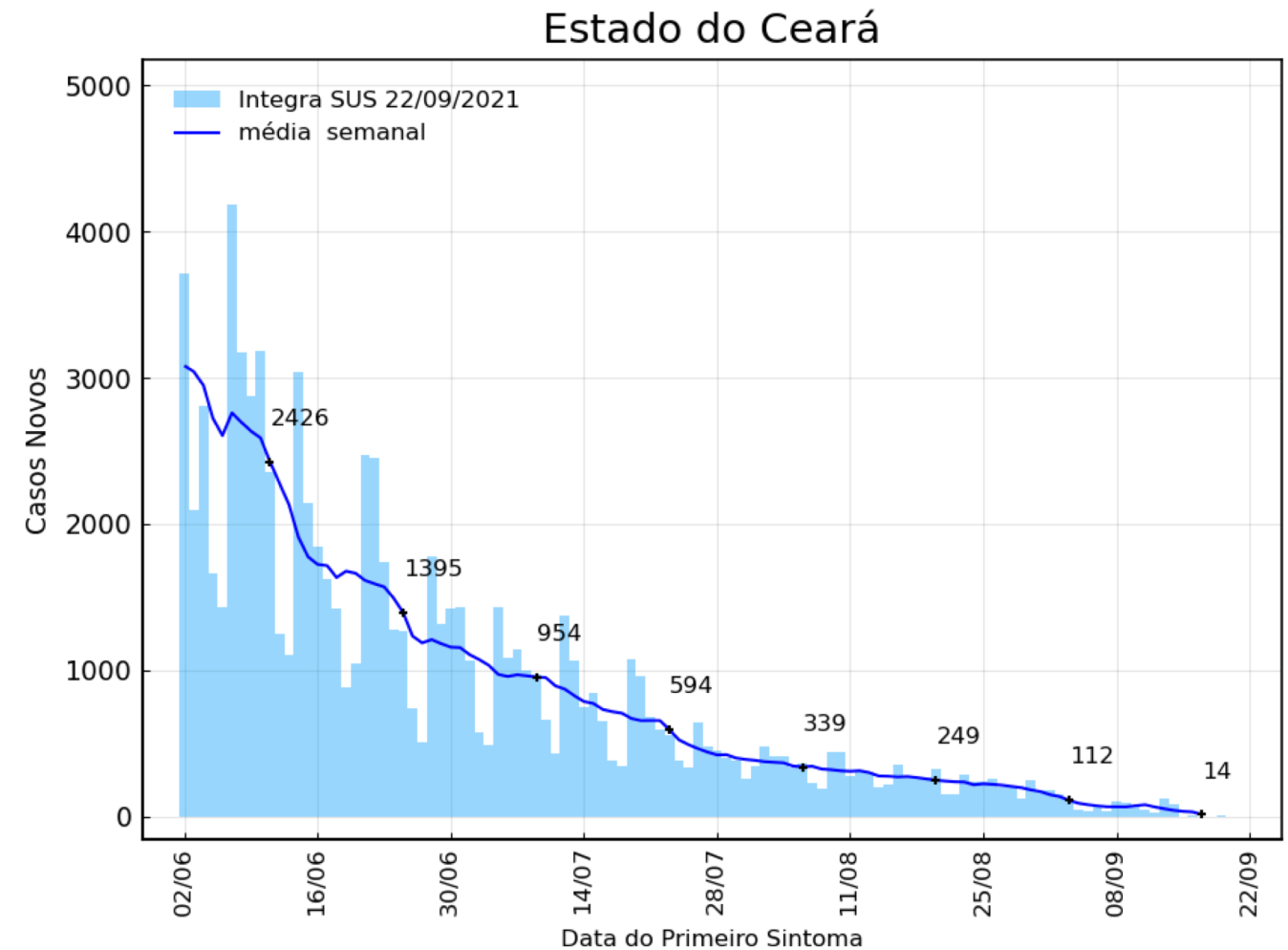
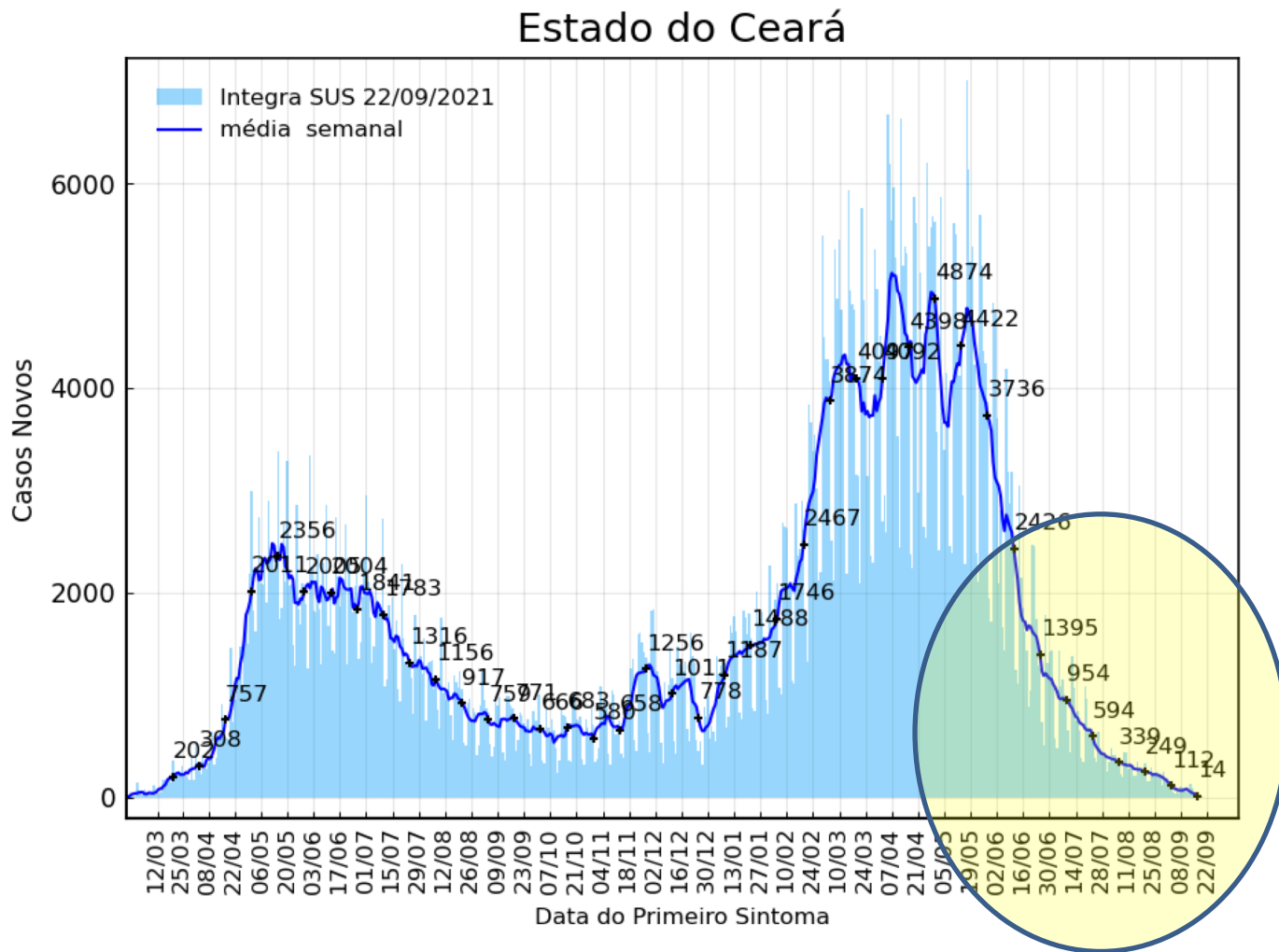
Saulo Reis (UFC - Física, CAPP - IPECE - SEPLAG)

César Sampaio Filho (UFC - Física, CAPP - IPECE - SEPLAG)



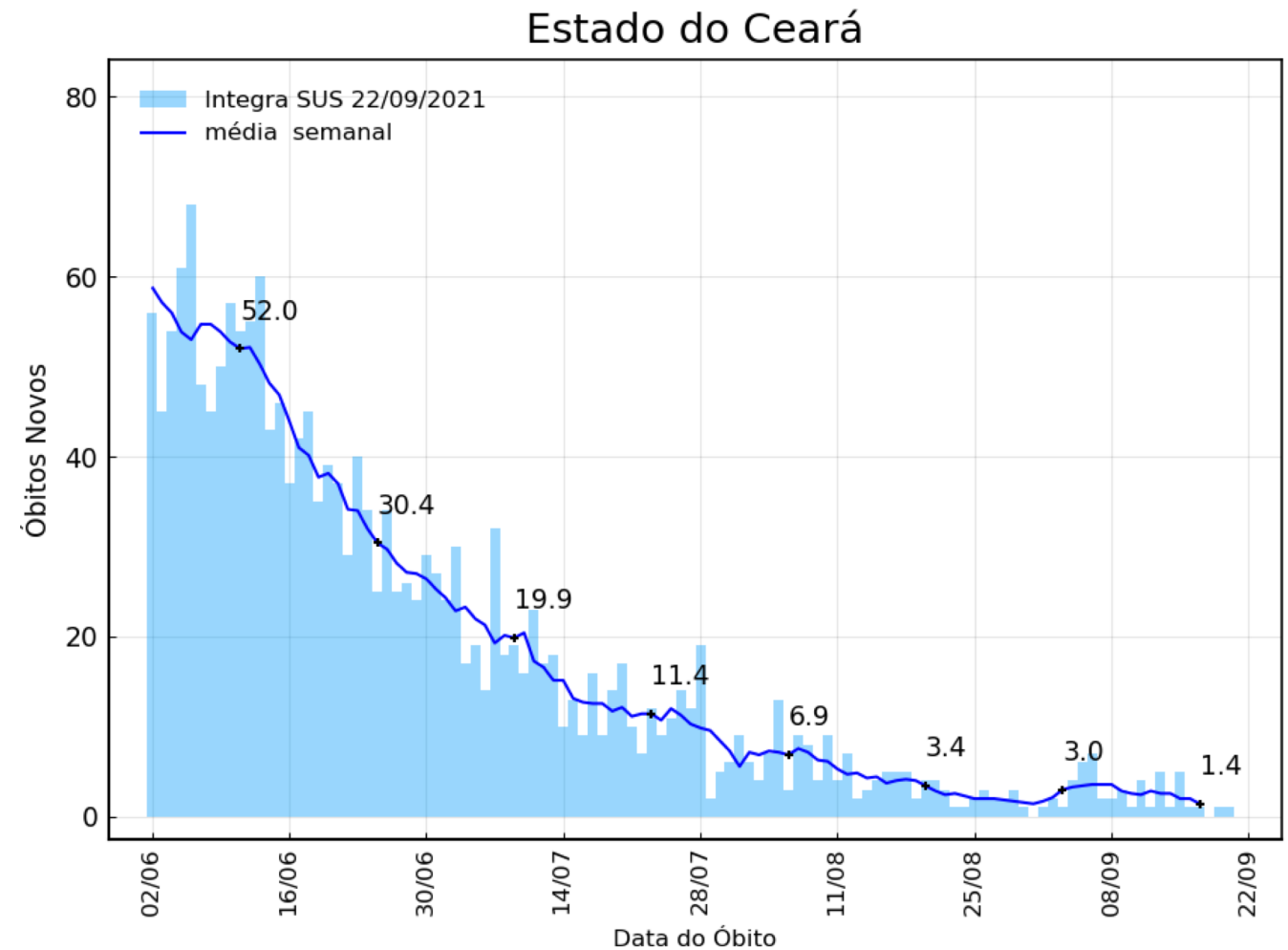
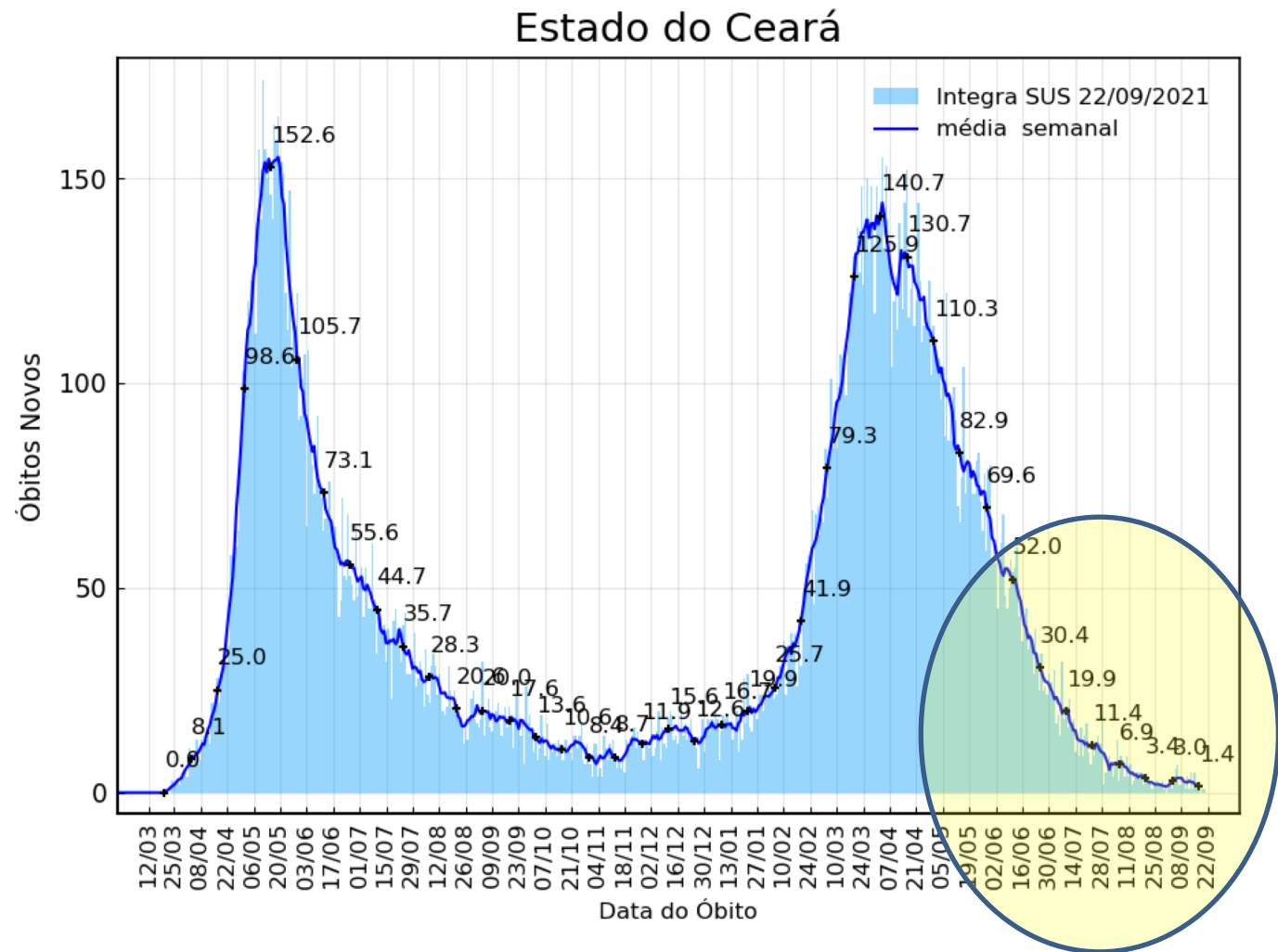
# Estado do Ceará

## Dados atualizados em 22/09/2021



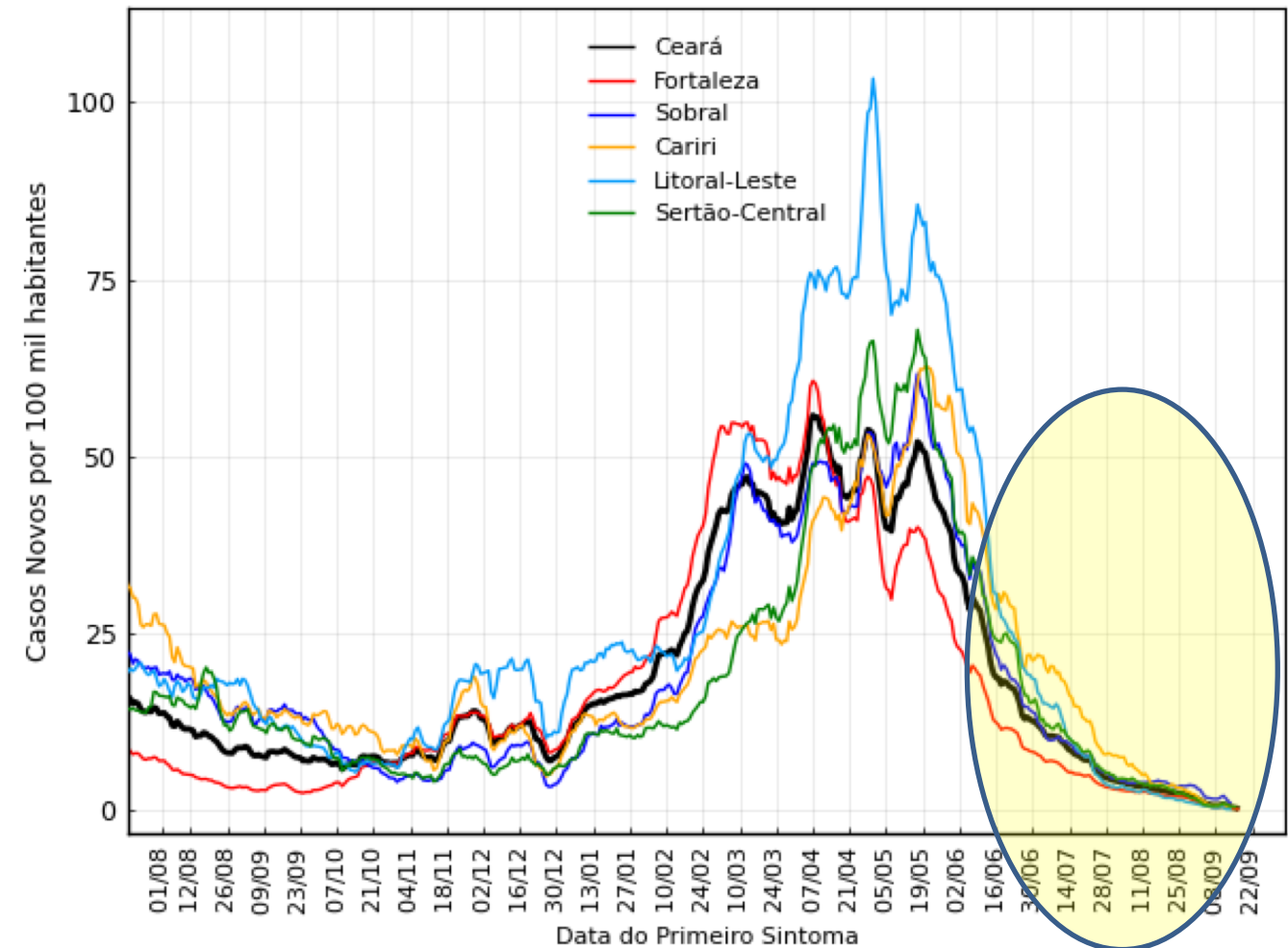
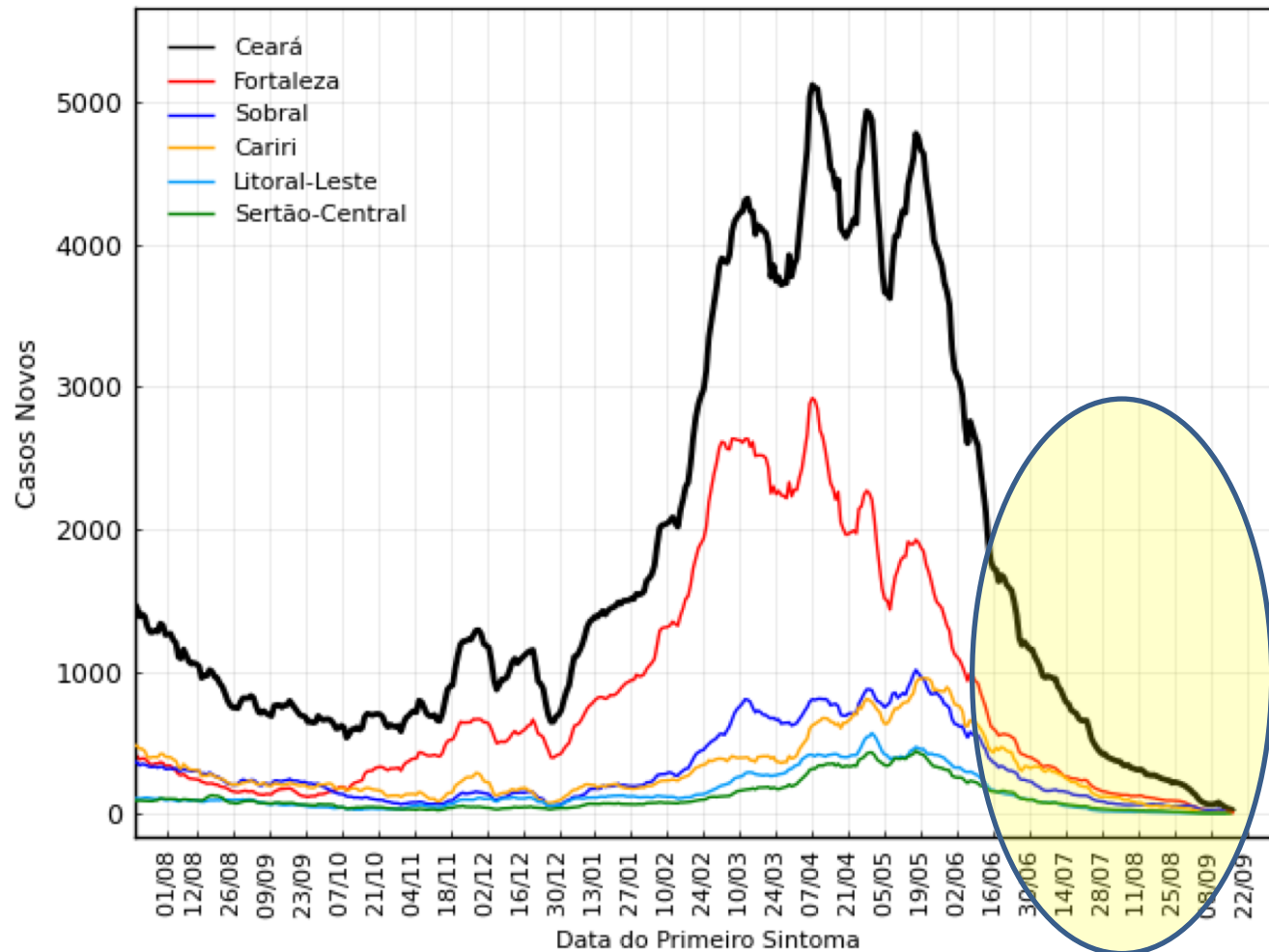
# Estado do Ceará

## Dados atualizados em 22/09/2021



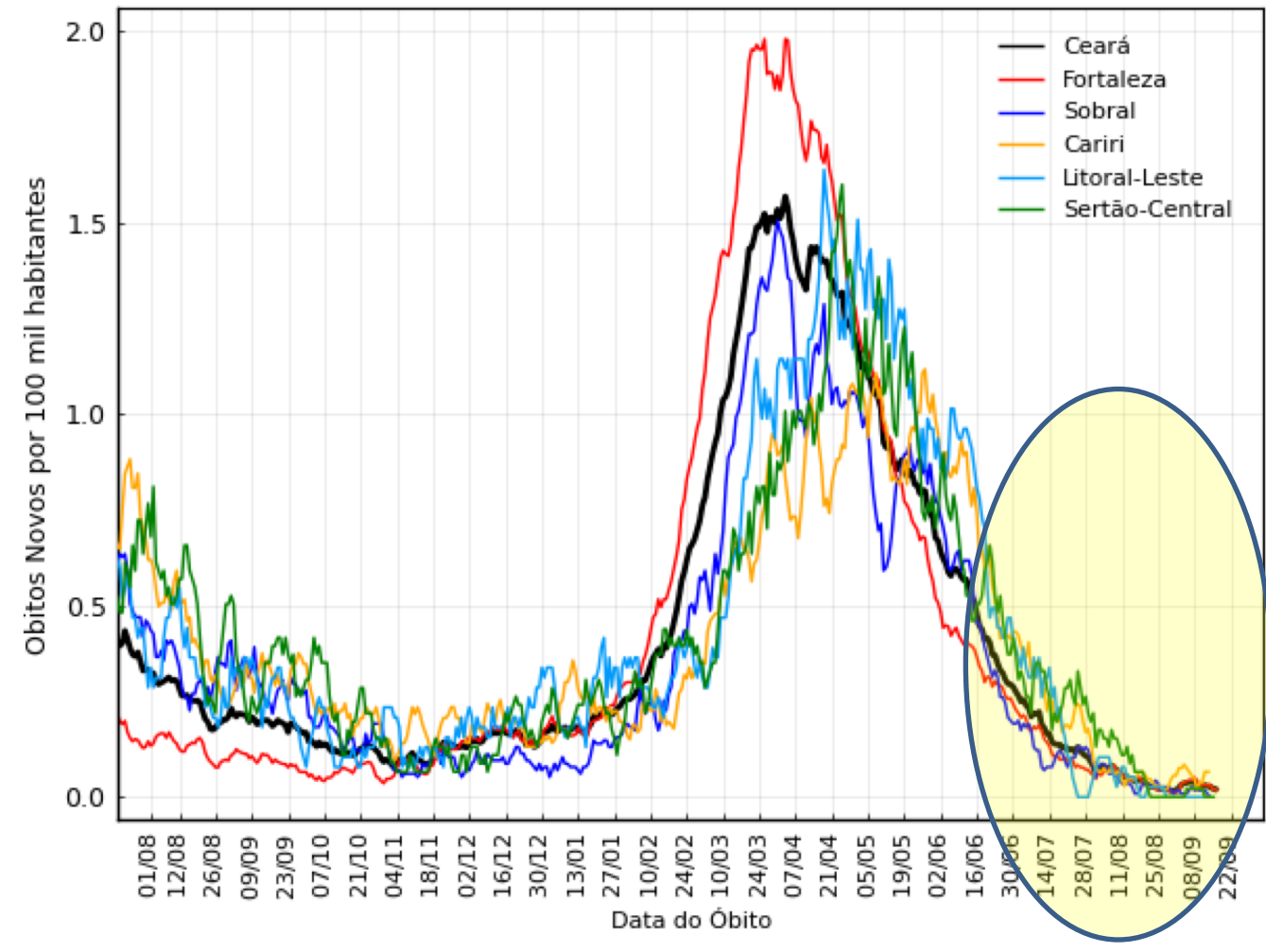
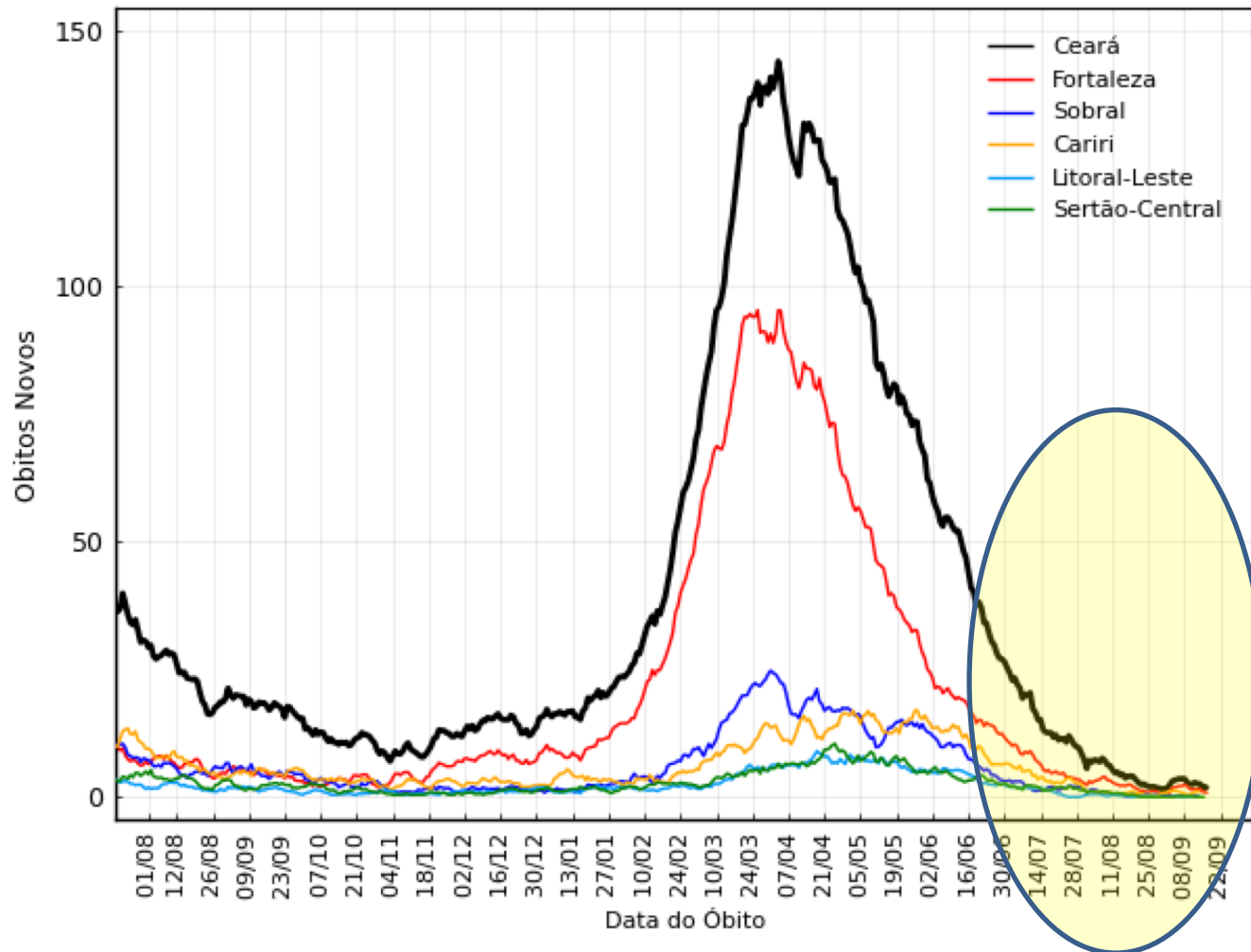
# Evolução da Epidemia no Ceará por Macrorregiões

## Casos Novos & Casos por 100 mil habitantes



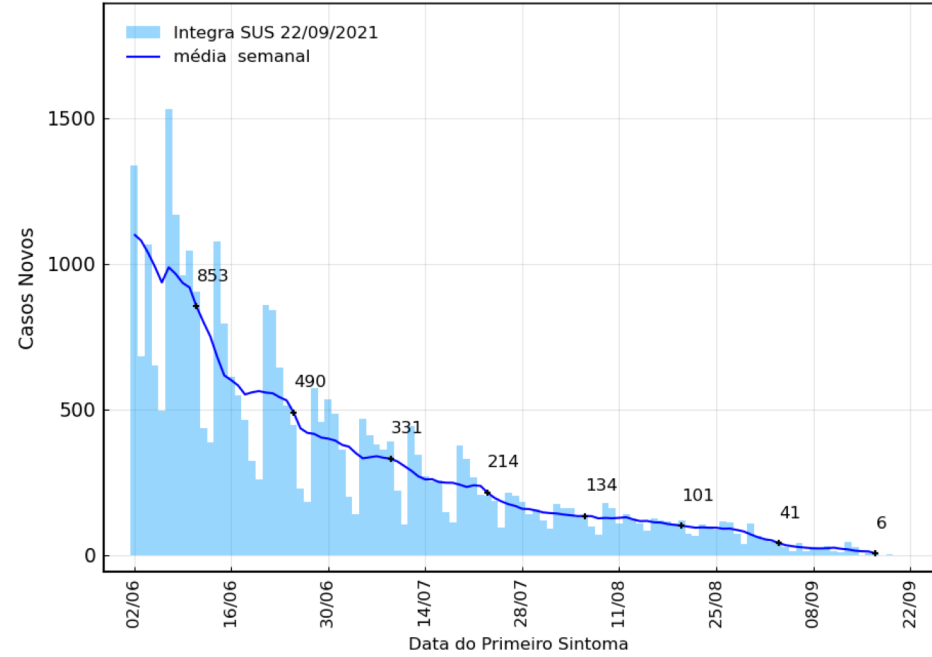
# Evolução da Epidemia no Ceará por Macrorregiões

## Óbitos Novos & Óbitos Novos por 100 mil habitantes

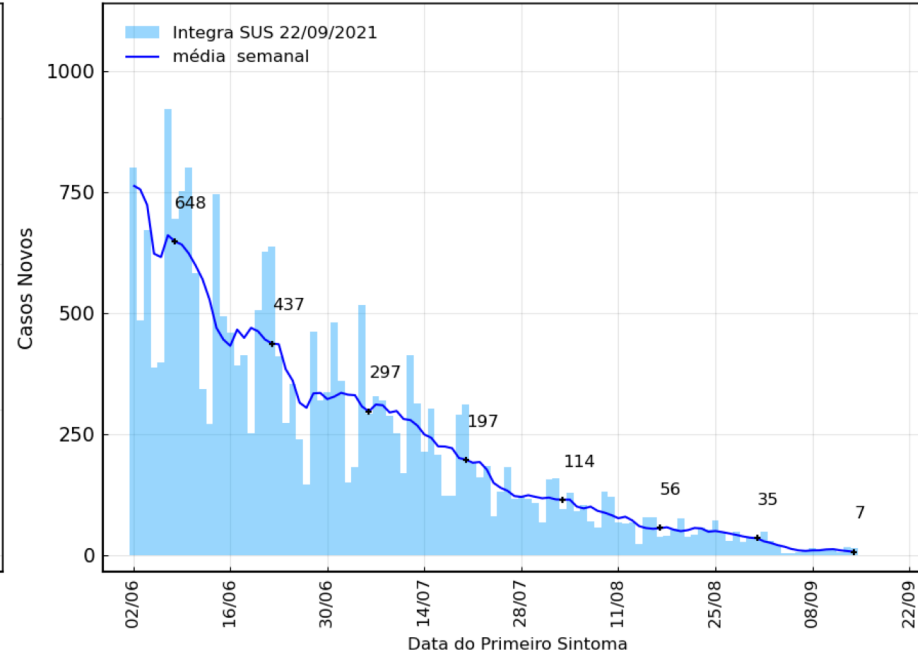


# Evolução Recente de Casos no Ceará por Macrorregiões

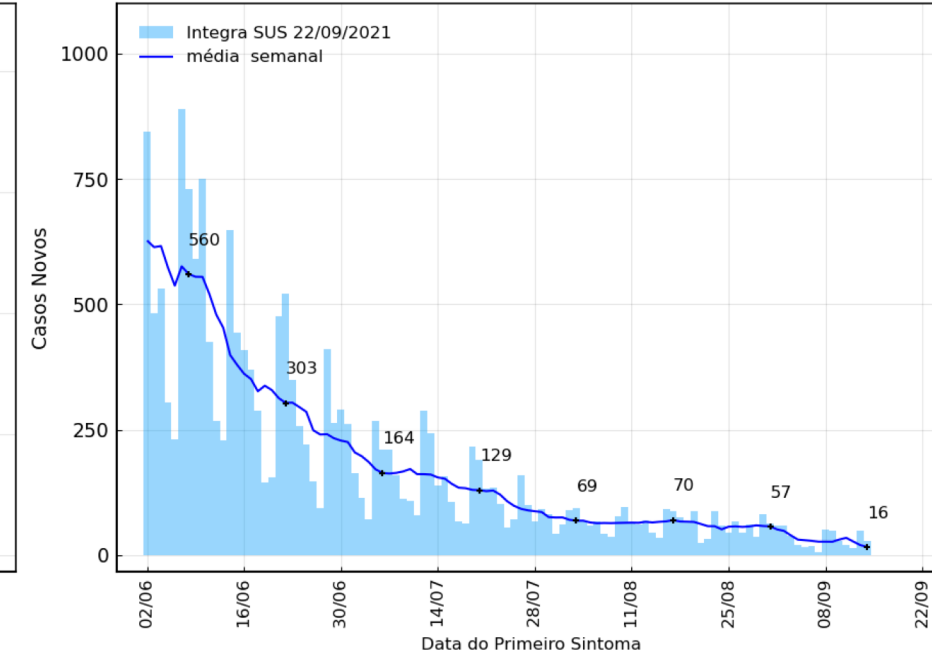
## Região de Fortaleza



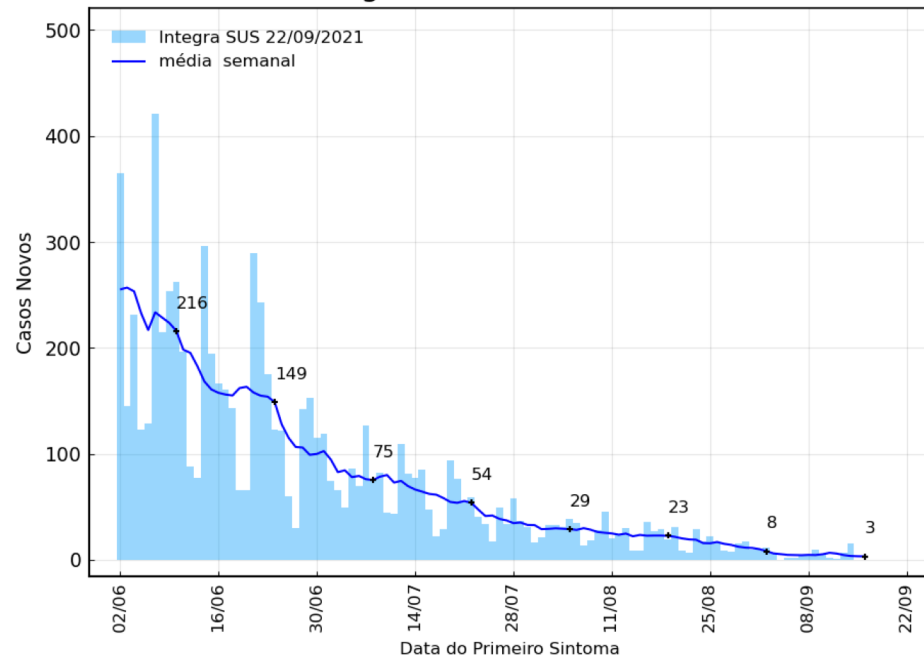
## Região do Cariri



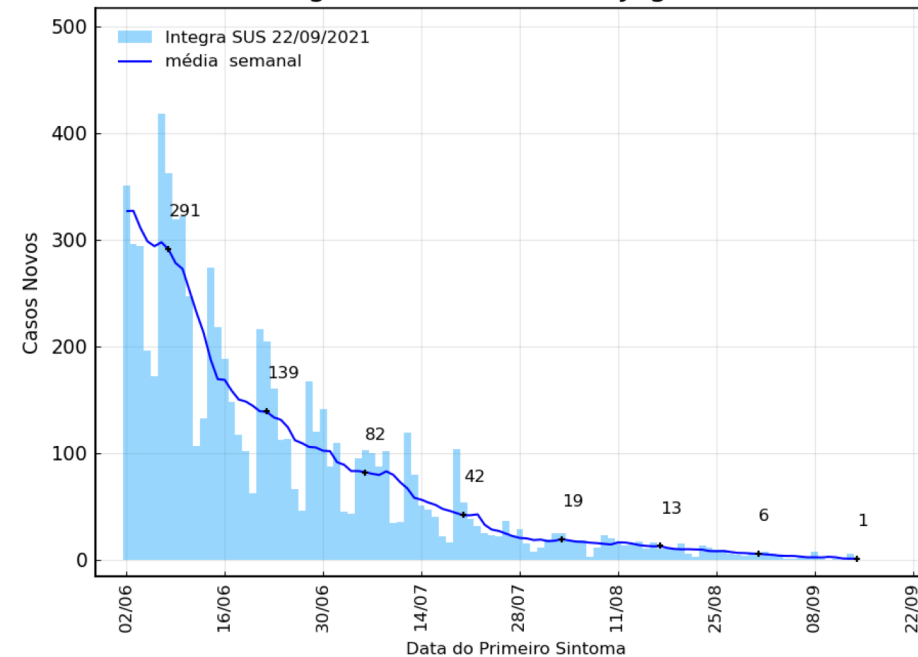
## Região de Sobral



## Região do Sertão Central

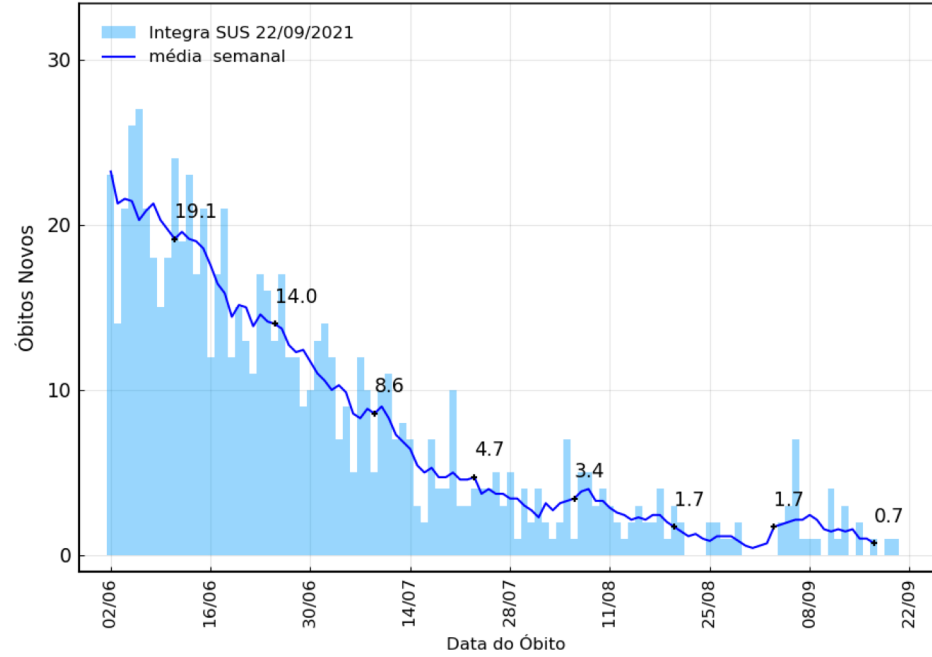


## Região do Litoral Leste/Jaguaribe

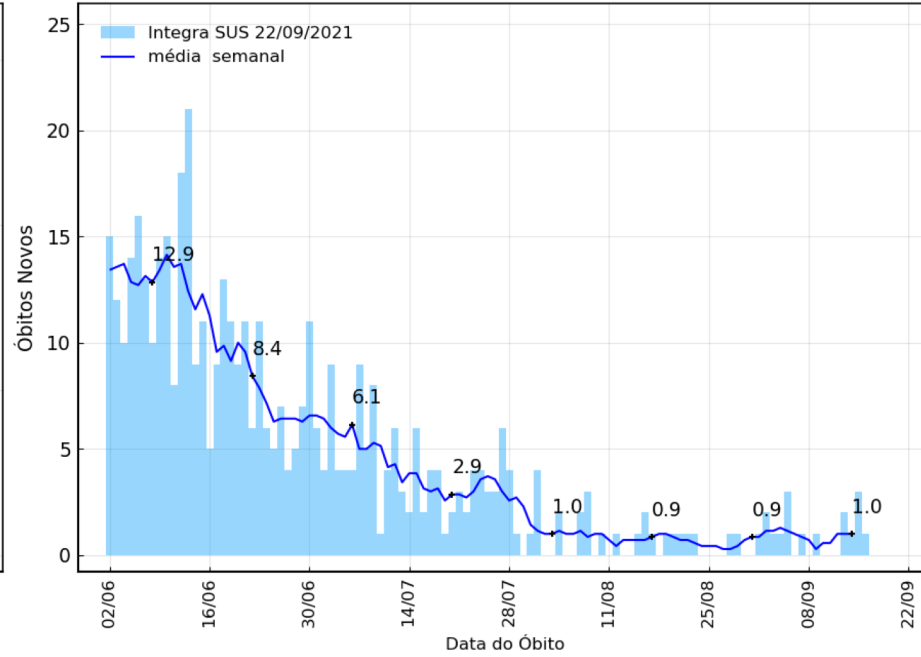


# Evolução Recente de Óbitos no Ceará por Macrorregiões

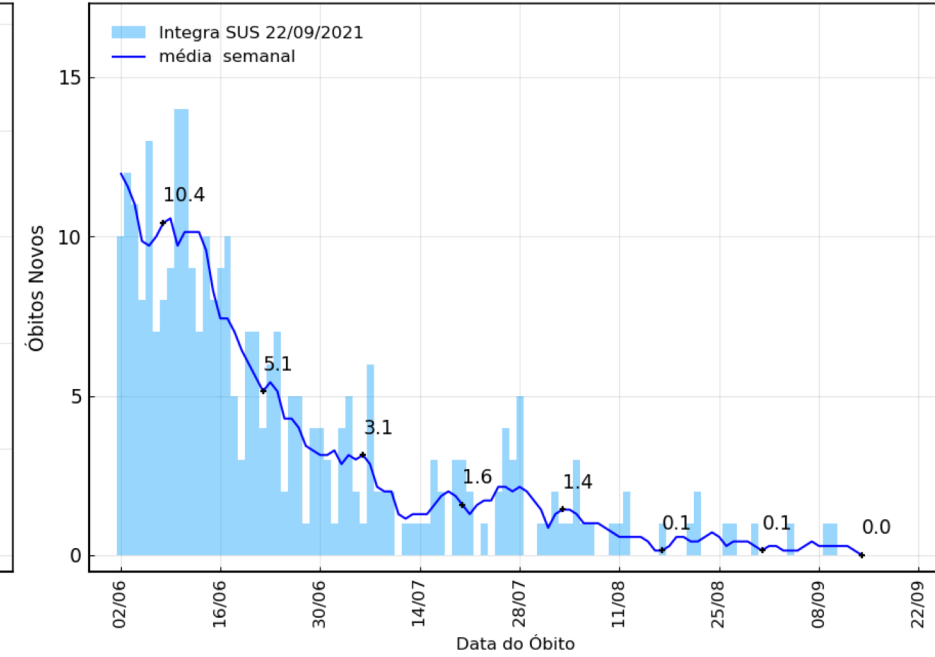
## Região de Fortaleza



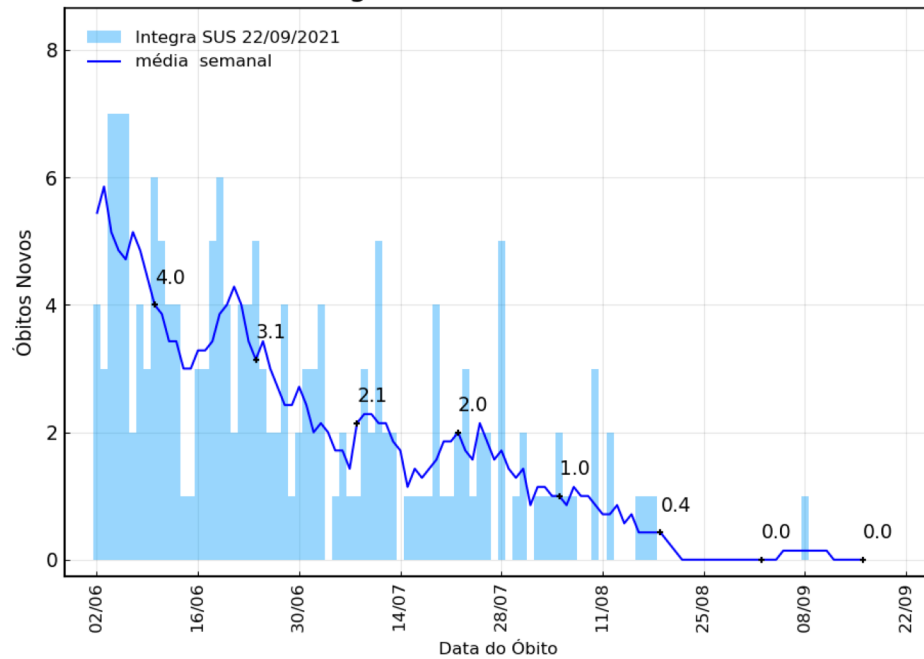
## Região do Cariri



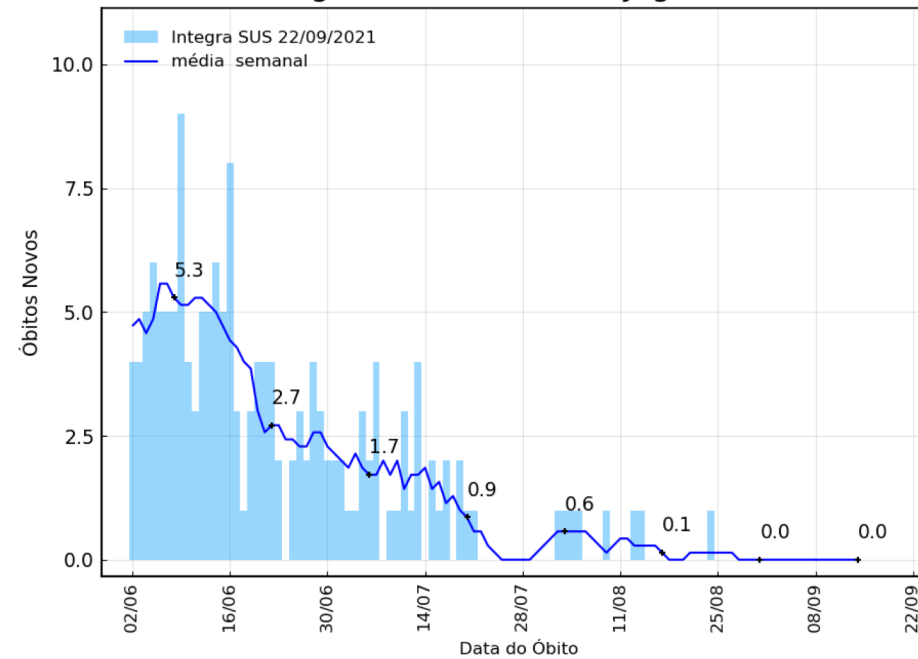
## Região de Sobral



## Região do Sertão Central

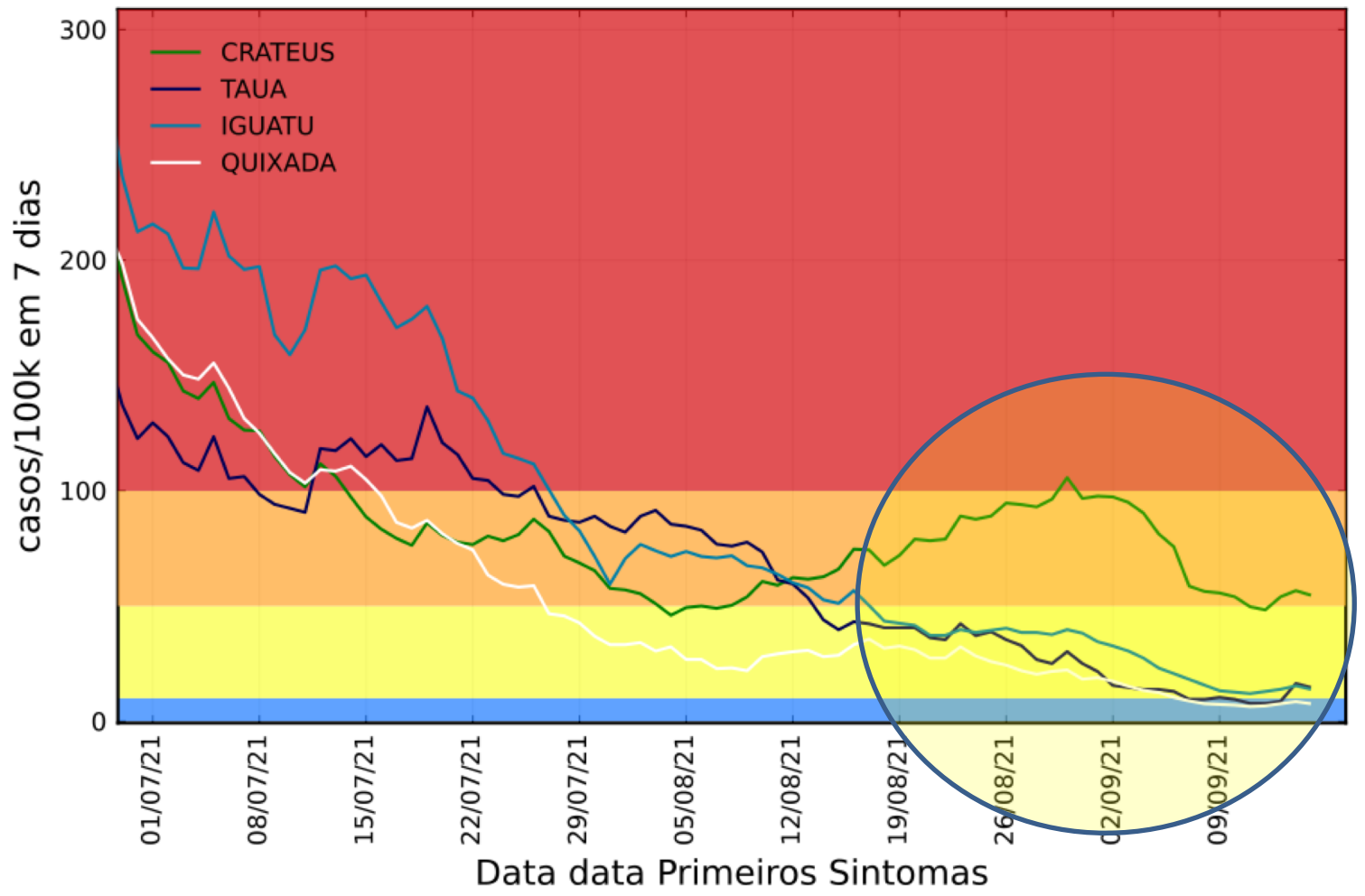
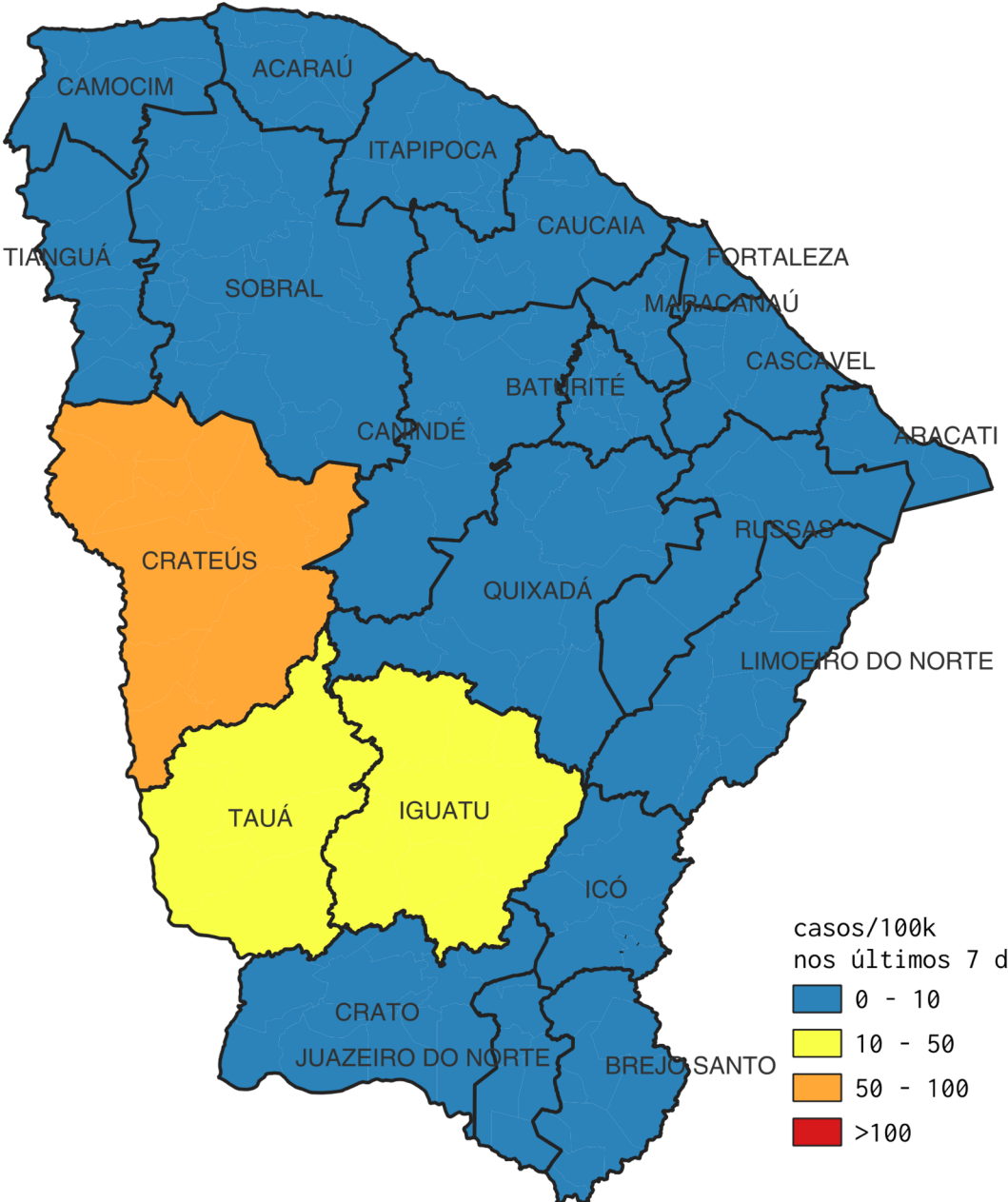


## Região do Litoral Leste/Jaguaribe



# Indicador CDC no Ceará por ADS

$\Sigma_{CDC} = \# \text{ total de casos por } 100 \text{ mil habitantes nos últimos } 7 \text{ dias}$

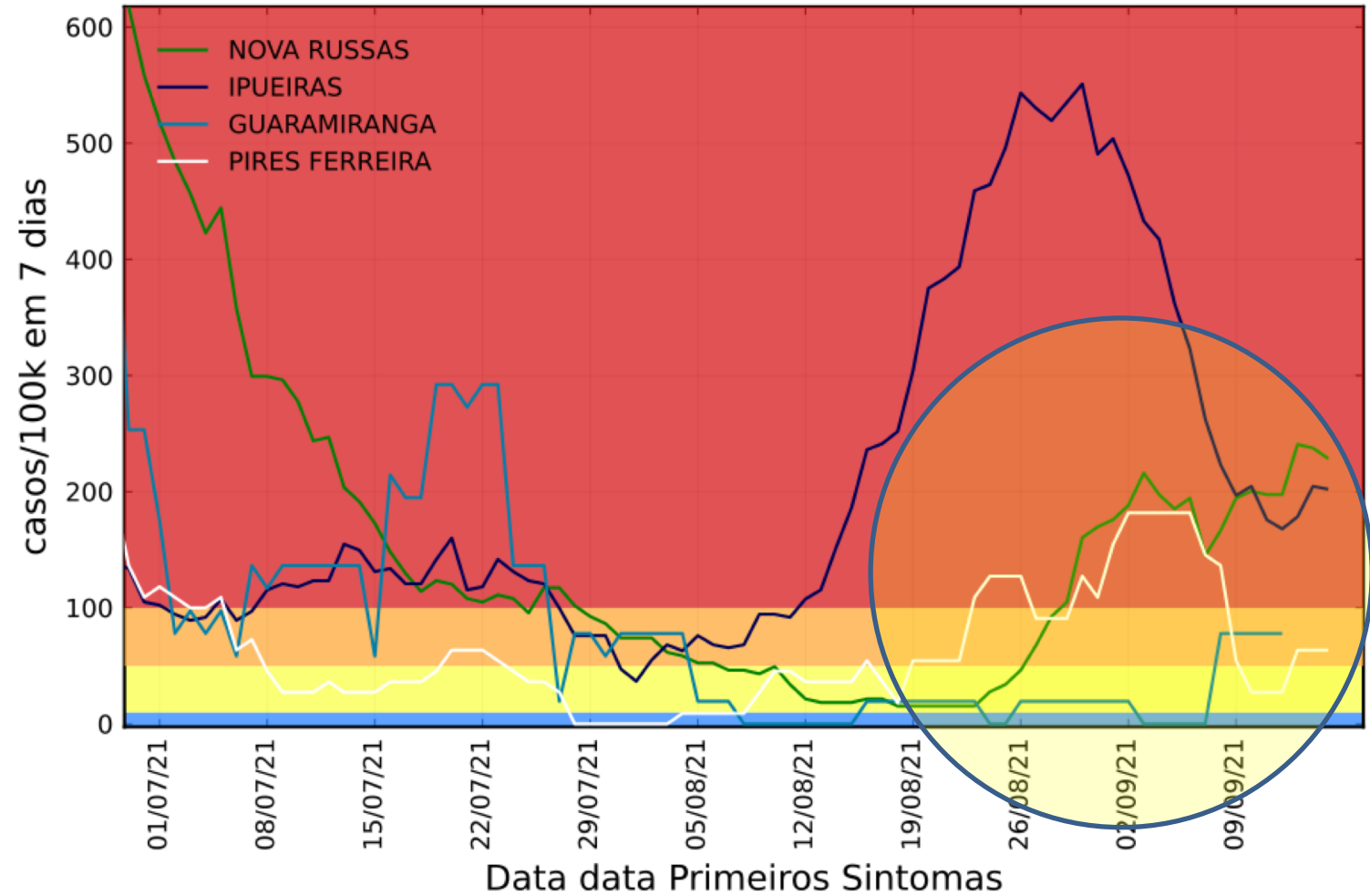
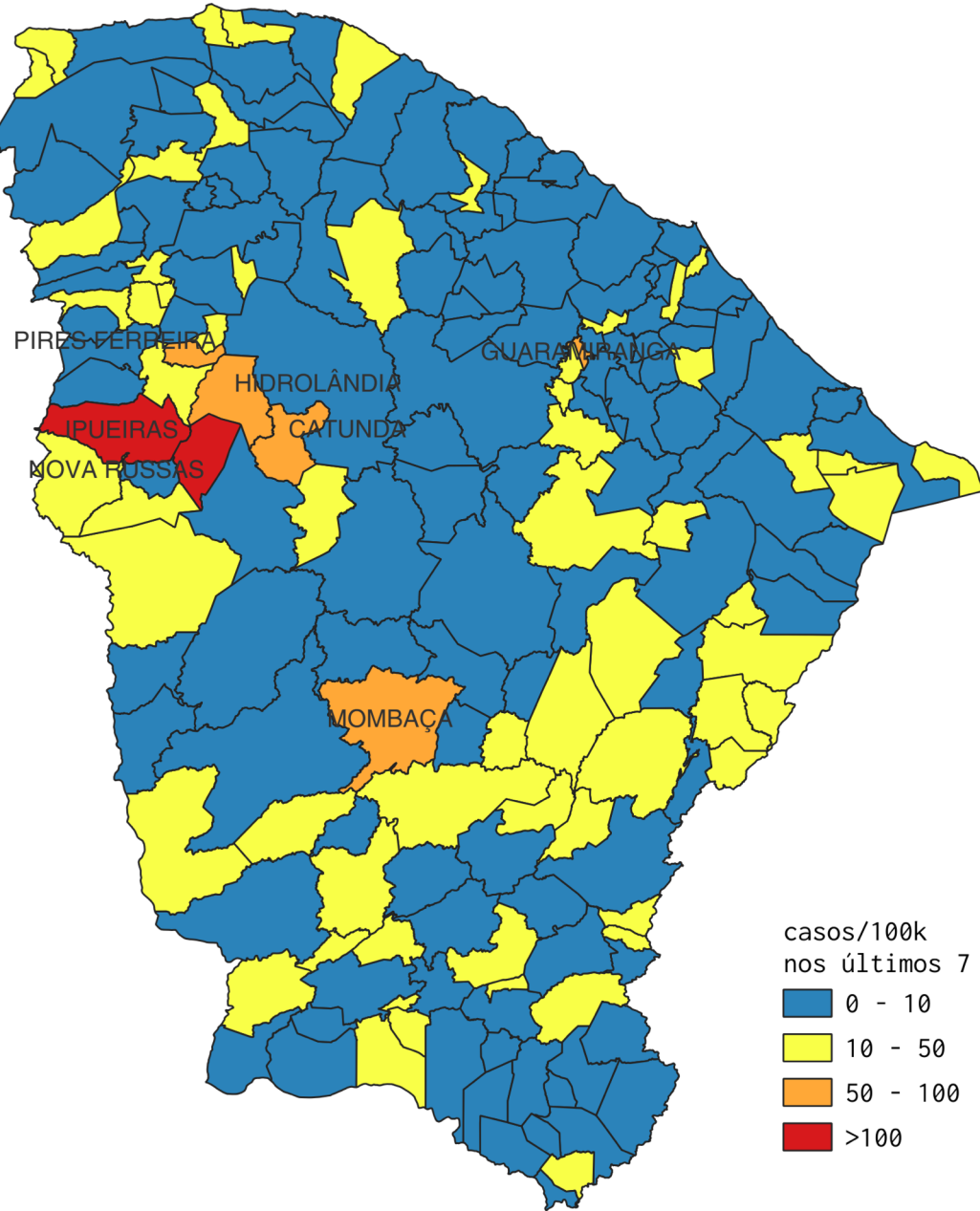


Indicator - If the two indicators suggest different transmission levels, the higher level is selected	Low Transmission Blue	Moderate Transmission Yellow	Substantial Transmission Orange	High Transmission Red
Total new cases per 100,000 persons in the past 7 days	0-9.99	10-49.99	50-99.99	≥100
Percentage of NAATs <sup>1</sup> that are positive during the past 7 days	0-4.99%	5-7.99%	8-9.99%	≥10.0%



# Indicador CDC no Ceará por Municípios

$\Sigma_{CDC} = \# \text{ total de casos por } 100 \text{ mil habitantes nos últimos } 7 \text{ dias}$



Indicator - If the two indicators suggest different transmission levels, the higher level is selected	Low Transmission Blue	Moderate Transmission Yellow	Substantial Transmission Orange	High Transmission Red
Total new cases per 100,000 persons in the past 7 days	0-9.99	10-49.99	50-99.99	≥100
Percentage of NAATs <sup>1</sup> that are positive during the past 7 days	0-4.99%	5-7.99%	8-9.99%	≥10.0%